

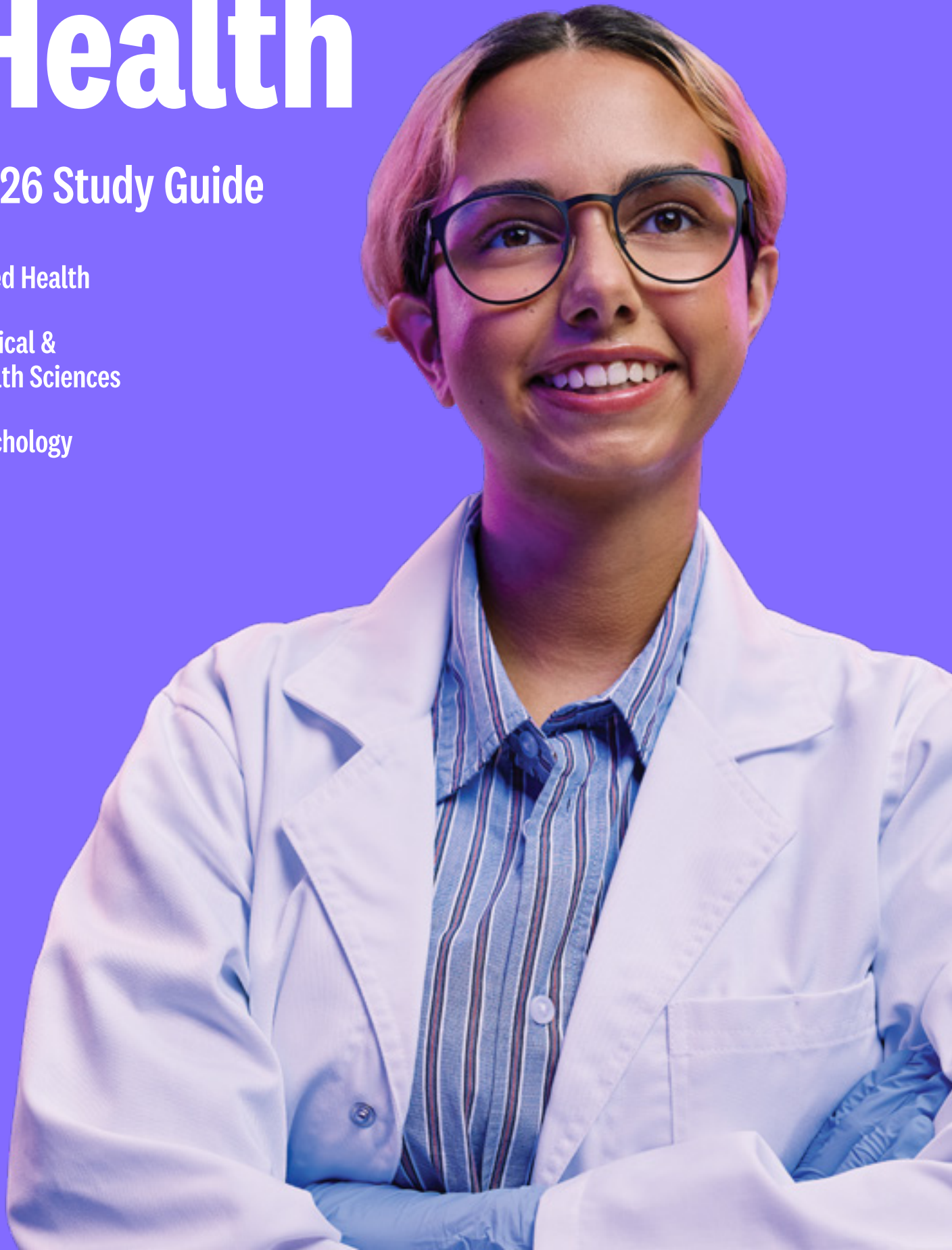
Health

2026 Study Guide

Allied Health

Medical &
Health Sciences

Psychology





Your University

We are a university for the future – focused on making an impact in our world and yours. We are built on the proven legacies of the University of South Australia and the University of Adelaide with an ambition to create lasting careers and opportunities for contemporary learners and global citizens, with innovative research that shapes society.

adelaideuni.edu.au

Contents



Launching Adelaide University in 2026	4
Our campuses	6
World-class facilities	8
Transformational teaching and learning	10
Scholarships	11
The Adelaide Attainment Model	12
Exceptional student experience	14
Pathways to Adelaide University	16
Preparatory programs at Adelaide University	18
Steps to success	20
Medical and Health Sciences	22
Biomedical and Health Sciences	26
Dental Surgery	30
Exercise and Sport Science	30
Human Movement	33
Medical Radiation Science	35
Medical Studies / Medicine	37
Midwifery / Nursing	38
Occupational Therapy	39
Pharmacy	40
Physiotherapy	41
Podiatry	41
Speech Pathology	46
Psychology	24
Community Health	29
Psychology	42
Careers and study	47
2026 Degrees	50
Further study	58
Study 100% online	60
Future-making research	61
Applying to the Adelaide University	62

Acknowledgement of Country

We respectfully acknowledge the Kaurna, Boandik, and Barngarla First Nations Peoples and their Elders past and present, who are the Traditional Owners of the lands that are home to our campuses across Adelaide and South Australia.

Launching Adelaide University in 2026



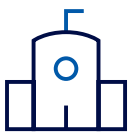
A new university with a rich history, Adelaide University is purpose-built and future focused – a place for outstanding educators, researchers, thinkers, innovators and entrepreneurs.

Education and research can empower communities. Adelaide University is rising to the occasion by delivering nation-leading curriculum, exceptional student experiences, greater access to education, world-class research excellence and strong industry partnerships.





Our ambitions



Member of the Group of Eight

Australia's leading research-intensive universities



Top 5 nationally for student experience

To be ranked in Australia's top 5 universities for student experience



Top 1 % of universities worldwide

To be sustainably ranked in the top 1% of universities globally



Second largest educator of low-SES students nationally



Top in Australia for student employment

To be ranked as the best university nationally for student employment outcomes



One of Australia's top 5 educators of regional and rural students

Our campuses

Perfectly positioned on North Terrace, our Adelaide City Campus is where cutting edge connects with tradition.

The campus encompasses precincts both east and west of the city. You'll find the latest in teaching and research facilities, along with buildings steeped in history, contemporary spaces and vibrant galleries.

Our regional campuses at Mount Gambier and Whyalla are well positioned within their respective regions, which offer a relaxed lifestyle.

At each of our campuses you'll find modern study and meeting spaces, including cosy student lounges, rooms for private or group study, quiet zones and collaborative areas.

Your learning will be well supported in our technologically advanced hospital and dental facilities, cutting-edge simulation facilities, suites, laboratories, and community clinics.

Discover vibrant social hubs where you can join a range of clubs and teams, or meet friends after class. Unwind and stay active at the on campus sporting fields and fitness hubs.

Enjoy a wide range of dining choices across our Adelaide City Campus precincts including casual favourites such as burgers and salads, plus Vietnamese and Japanese eateries. Mint café will become your go-to at Whyalla campus while you can grab something fresh and tasty from the canteen at Mount Gambier Campus.

You'll never be far from your next class with affordable on campus student accommodation at Whyalla, while city loop buses will get you around Mount Gambier with ease. Adelaide City Campus is accessible by train, tram and bus with nearby car parking and bike storage available on campus.



Adelaide City Campus



Mount Gambier Campus



Whyalla Campus

World-class facilities



Dental Simulation Clinic

Technologically advanced simulation facilities

Build your skills and knowledge in safe and supportive simulated healthcare settings. Adelaide University is home to the most technologically advanced simulation facilities in Australasia, and the only facility accredited by the Society for Simulation in Healthcare for excellence in learning and teaching. Our simulated hospital has been designed to align with real-world facilities and includes high-tech manikins representing patients across the lifespan, from neonatal to adults. Our simulated dental clinic includes 90 individual simulators and two fully equipped dental surgeries.

Community clinics

Adelaide University operates a range of on campus healthcare clinics that will provide you with real-world, hands-on learning opportunities. Supported by experienced health professionals, you'll develop confidence and deepen your knowledge through patient interactions. Our clinics include high performance and exercise physiology, physiotherapy, podiatry, occupational therapy, speech pathology and midwifery.



Physiotherapy community clinic



Anatomy Lab

Labs for learning

Our wet/dry anatomy lab will provide you with a dedicated space to build the anatomy knowledge essential to your chosen healthcare discipline. You'll be able to study the relationships and function of various bones, tissues, organs, ligaments and tendons in order to make diagnoses and explore effective treatments. As a laboratory medicine student, you'll be able to expand your skills in diagnostic pathology and research in our well-equipped histopathology and haematology labs. You'll have access to the equipment to study tissue and blood samples, explore cross-matching for blood transfusions, screen for cancer cells and more.

Clinical training suites

Adelaide University is one of the few universities in Australia that has a Virtual Environment Radiation Therapy (VERT) training suite on campus. As a medical radiation student, VERT will enable you to look at the internal structures of a patient and virtually see the radiation dose being delivered. Pharmacy students will benefit from our integrated learning suite which includes a virtual range of pharmacy's medicine range, allowing you to simulate patient interactions. You'll learn to dispense medicines, counsel patients, and develop critical clinical service delivery skills in our supportive training suite.



Virtual Environment Radiation Therapy (VERT) training suite

Transformational teaching and learning

Enabling educational achievement

Adelaide University is a place for lifelong learners, thanks to our comprehensive and contemporary curriculum. Our teaching approach is shaped by our partnerships with industry and we have built work integrated learning into our degrees. Our learning practices are supported digitally while also being internationally connected and reflective of our research.



Fields of study

Adelaide University will offer more than 300 degrees across a wide range of in-demand disciplines. Our comprehensive suite of degrees will produce career-ready employable graduates, from all walks of life, aligned to disciplines and jobs in future areas of demand, including:

- Business and Economics
- Agriculture, Animal and Veterinary Science
- Architecture and Design
- Aviation
- Creative, Media and Communication
- Computer Science and IT
- Engineering
- Health and Biomedical Sciences
- Humanities and Social Sciences
- Law and Justice
- Mathematics and Data Science
- Medicine, Dentistry and Oral Health
- Music
- Nursing and Midwifery
- Property, Construction and Real Estate
- Psychology and Social Work
- Science and Environment
- Teaching and Education

Scholarships

For further information on scholarships visit: adelaideuni.edu.au/study/scholarships

Adelaide University is committed to providing educational opportunities by offering a range of scholarships. We're dedicated to ensuring students from all walks of life can access higher education. A scholarship could be the incentive you need to launch your future with us, and ensure you're prepared to step forward with confidence toward your career goals.

We're here to support your studies and help you thrive at university. Become the best you can be with an Adelaide University scholarship.

Adelaide University Vice Chancellor Scholarship

A scholarship rewarding exceptional academic achievers. Recipients receive a stipend of up to \$10,000 per annum and a 100% fee waiver for up to four years¹.

Adelaide University Future Leaders Scholarship

A scholarship recognising high academic achievers who demonstrate leadership potential and community service. Recipients will receive a stipend of up to \$15,000 per annum for the duration of the degree.

Adelaide University Aspire Scholarship

A scholarship acknowledging academic achievers who demonstrate leadership potential and community service. Recipients will receive a stipend of up to \$5,000 per annum for the duration of the degree².

Adelaide University Principals Scholarship

A scholarship rewarding students who have excelled in their school academically and exhibited qualities of active service to their school and/or community. Recipients are nominated by their school principal and will receive a stipend of up to \$3,000 per annum for three years.

Adelaide University Attainment Scholarship

A scholarship supporting students who demonstrate leadership and active community service within a work, academic or community setting and are commencing university studies through a non-ATAR or equivalent selection rank, ie. International Baccalaureate admissions pathway.

Adelaide University Career Catalyst Scholarship

A scholarship supporting students to develop their careers, with the support of an employer. Eligible recipients will receive a 30% fee waiver for the duration of their degree.

Adelaide University Postgraduate Grant

A grant for students looking to advance their career opportunities or change career direction by commencing a Master by coursework degree. Recipients will receive a one-off payment of \$5,000.

Adelaide University Access Scholarship

A scholarship supporting students who have demonstrated financial barriers to accessing post-secondary study. Recipients will receive an annual stipend of up to \$6,000 per annum³ for the duration of the degree.

Adelaide University Online Grant

A grant dedicated to students studying online and who have demonstrated financial barriers to accessing post-secondary study and/or reside in a rural, regional, or remote community. Recipients will receive a one-off payment of \$1,500.

Adelaide University Aboriginal and Torres Strait Islander Leaders Scholarship

A scholarship acknowledging exceptional academic achievement of Aboriginal and Torres Strait Islander students who demonstrate leadership potential or active service in their school or community. Recipients will receive a stipend of up to \$15,000 per annum for the duration of the degree.

Adelaide University Aboriginal and Torres Strait Islander Aspire Scholarship

A scholarship acknowledging academic achievement of Aboriginal and Torres Strait Islander students who show leadership or active service in their school or community. Recipients will receive a stipend up to \$5,000 per annum for the duration of the degree.

Adelaide University Aboriginal and Torres Strait Islander Student Scholarship

A scholarship supporting Aboriginal and Torres Strait Islander students who have demonstrated financial barriers to accessing post-secondary study. Recipients will receive an annual stipend of up to \$6,000 per annum³.

¹ Some degree exclusions apply.

² This scholarship is offered to students who have been shortlisted for the Adelaide University Leaders Scholarship but were not awarded the scholarship, or received a conditional offer but did not meet the 95 Selection Rank criteria.

³ Stipend amount will be awarded on severity of financial hardship.

The Adelaide Attainment Model

We're transforming how you'll study by reimagining the teaching and learning experience. The Adelaide Attainment model is designed for the contemporary learner and supports flexibility and engagement.



Stackable degree structures

- Enables multiple entry pathways and multiple transition points creating personalised study journeys.
- Provides greater flexibility to support study-life balance.
- Easier credit transfers between degrees.



Digitally rich learning environment

- Enhances accessibility and flexibility through the latest digital technologies.
- Provides instant content delivery and active-learning and collaboration.



Integrated learning in industry and community

- Engage in real-world industry, community and professional settings.
- Opportunities for internships, placements, community projects, volunteering, or global study experiences.
- Connect with professional networks while you study.



Common Core courses

You will be able to select Common Core courses from knowledge areas most valued by employers, including:

Artificial Intelligence:

Introduces the fundamental principles, techniques, and real-world applications of AI.

Data Knowledges:

Explores data types, sources, and structures, best practices for collecting, managing and analysing data, and strategies for evaluating and communicating information effectively.

Entrepreneurship and Design Thinking:

Develops the tools and mindset to identify opportunities, develop sustainable solutions, and drive positive change.

Ethical Knowledges:

Uncovers the fundamental principles of moral reasoning and their application to real-world situations.

Intercultural Understanding:

Fosters cross-cultural communication and competency and a deeper understanding of how one's cultural background shapes life experiences.

First Nations Knowledges:

Learning and centring Aboriginal voices and ways of knowing, being and becoming.



Graduate qualities

Our curriculum design means you will graduate as a:

Lifelong learner:

Have enduring passion for personal and professional development.

Ethical Leader:

Do what is right over what is easy.

Strategic problem solver:

Approach challenges with analytical rigour and creative insight.

Global citizen:

Respect your role in the world and your capacity to enact positive change.

Resilient thinker:

Succeed by harnessing critical, creative and adaptable thinking.

Trusted communicator:

Articulate ideas effectively and inspire change.



Embedding First Nations knowledges

First Nations Knowledges are meaningfully embedded into all curriculum through careful and purposeful collaboration with Aboriginal scholars, academics, Elders, Communities and Knowledge Holders. Cultural safety, strengths-based approaches, and centering Aboriginal voices and ways of knowing, being and becoming are emphasised and integrated across all our study areas.

The Adelaide Academy

The Adelaide Academy provides a wide range of intercurricular, co-curricular and extracurricular activities across a range of areas, including personal discovery, equity and social change, innovation, leadership for the future, and widening perspectives as well as additional mentoring and work-integrated learning.

Equity

Adelaide University provides equity-aligned pathways to study and personalised support to remove barriers to education. This includes:

- An environment that supports diverse student participation.
- Equitable access to a world-class education for learners of potential.
- Advancing the access, participation and success of First Nations Peoples.
- Supporting you through your university experience to help you succeed in your learning and career journey.



Exceptional student experience

adelaideuni.edu.au/life-at-adelaide/student-life

Adelaide University celebrates diversity and student voices. Our vibrant and inclusive student community is a place for you to feel empowered, explore your passions and discover your purpose.



We're here to support you on your student journey, from day one. On campus and beyond, you'll have access to dedicated teaching and supporting staff, and a wide range of services.

Aboriginal student services

Culturally safe and dedicated support services including scholarships, study help, peer mentoring and more, are available to Aboriginal students.

Academic support

Whether you need general study guidance or more specific assistance, we've got you covered. You'll have access to writing, study skills and maths support, along with peer-led learning and 24/7 online support.

Access and inclusion

If you have a disability, impairment, chronic health condition, or significant caring responsibilities, you can access confidential and personalised advice, adjustments and support to help you reach your study goals.



Accommodation

Find your home away from home. We'll support you to find and apply for accommodation that's convenient, safe, accessible and right for you.

Career services

Prepare for a lifetime of success. Attend networking and industry events, build career planning and management skills, access job opportunities and more.

Counselling

Take care of your personal wellbeing with access to qualified counsellors on campus and online. Sessions are free and confidential.

Health clinics

Stay healthy by accessing a range of on campus health clinics at reduced student rates including GP services, physiotherapy, podiatry, psychology and more.

Orientation

Take the first step toward a fulfilling experience with our Orientation program. Join a campus tour, gain an understanding of your degree, meet people you'll be studying with and enjoy fun activities and events. You'll also be able to participate online.

Religious needs

Private prayer rooms are available across all our campuses. You can also join a faith-based student group or connect with a range of religious chaplains and pastors on campus.

Sports and fitness

Join a sports team, take a group fitness class, or hit an on campus gym or pool between classes. There's something for everyone to stay fit and feel good.

Student clubs, societies and association

Your student association is the voice and social heart of your student experience. With a wide variety of clubs and societies, you'll be sure to find your people and your passion.



Pathways to Adelaide University

There are many ways you can gain entry into one of our degrees.



Selection rank



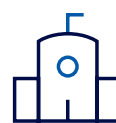
Guaranteed Entry



Grade-based Entry



STAT



Higher Education GPA



VET studies

Selection rank (ATAR plus adjustment factors)

If you have qualified for the South Australian Certificate of Education (SACE) or hold an equivalent recent year 12 qualification, including the International Baccalaureate Diploma (IB), and have achieved a competitive selection rank, you can use this as a pathway into university.

Your Selection Rank (ATAR plus any applicable adjustment factors) will be used to compete for a place in a university degree. For the majority of our undergraduate degrees, you must not have completed more than 2 years full-time equivalent university study (48 units) to use your year 12 results.

Some degrees take additional factors into account as well as or instead of your ATAR, such as auditions, the University Clinical Aptitude Test (UCAT), oral interviews, etc.

Guaranteed Entry

Guaranteed Entry gives you certainty when applying to study at Adelaide University using your ATAR. Most of our undergraduate degrees have a fixed entry selection rank (including adjustment factors), which means if you achieve that selection rank or higher, and meet any additional admissions criteria such as subject prerequisites, you are guaranteed entry into that degree.

Grade-based entry

If you've completed your SACE and achieved an ATAR, you may also be eligible for entry into some of our most popular degrees based on your grades in selected year 12 subjects. You don't need to apply to be considered for grade-based entry, as this will automatically be done by SATAC on behalf of Adelaide University.





STAT (Skills for Tertiary Admissions Test)

Never completed year 12 or any other higher education? You may wish to use the Skills for Tertiary Admissions Test (STAT) to gain entry to university. The STAT is a two-hour, multiple-choice test designed to assess a range of skills and knowledge needed to study at university.

The Australian Council for Educational Research (ACER) coordinates the STAT. To sit the test, you'll need to be over 18 years old before 1 February in the year that you wish to commence study. If you have been enrolled in the last two years, you must not have completed more than two years (full-time) tertiary study in total. For more information, visit:

stat.acer.org/au

Higher Education GPA (Grade Point Average)

If you already have completed at least six months (full-time) of a recognised higher education degree at a recognised higher education institution, you can use your Grade Point Average (GPA) to gain entry to Adelaide University.

Internal transfer

Perhaps you gained entry to a degree that wasn't your first preference or, after completing a few courses, have changed your mind about what you'd like to study. You can use your GPA (or any eligible previous qualifications) to apply for what is called an internal transfer. This is an option available to students who may have already started studying in one degree and, for a range of different reasons, would like to transfer into another degree at the same university. Please note that not all degrees are available via internal transfer. If unsure, you can contact our friendly student advisors for assistance.

Vocational Education and Training (VET) Studies (Certificate IV or higher)

Have you completed a VET qualification at a Certificate IV or higher level? Your completed qualification can gain you entry to many of our degrees.

For students that have studied at either TAFE SA or other Registered Training Organisations (RTOs), most Certificate IV courses (including former Advanced Certificates or equivalent) meet the minimum entry requirements for a wide range of our undergraduate degrees. In some instances, a successfully completed Diploma or Advanced Diploma will be required to meet the minimum entry requirements.

Preparatory programs at Adelaide University

Adelaide University is committed to providing access to higher education for people from all backgrounds and circumstances in life, and we offer a range of preparatory programs to help you gain entry into your preferred degree.

Fee free tuition (a student amenities fee is required)

Our Foundation Studies and Aboriginal and Torres Strait Islander Pathway programs provide fee-free pathways to university, regardless of your educational experience. If you do not meet the required qualifications for direct entry into a bachelor degree, these programs provide alternative entry options while helping you adjust to the university environment.

Our preparatory programs set you up to succeed at university by building academic skills and prerequisite knowledge. You'll experience life as an Adelaide University student, learn from expert staff and have access to the full range of support services we provide.

Once you've successfully completed your program, you'll be able to transfer into one of Adelaide University's world-class undergraduate degrees.

Foundation Studies

Foundation Studies is a fee-free program with no tuition fees. A student services amenities fee applies to all university students which can be deferred through the Federal Government HECS-HELP loan scheme. This program supports students with no previous qualifications to learn the skills required for successful university-level study.

It is designed for a range of students, including those who may not have an ATAR, are from regional and remote areas, are first in their family to attend university or who may have spent extended periods of time away from formal education.

The Foundation Studies program is split into three blocks, with a series of entry, exit and transition points that cater to diverse educational backgrounds and your chosen destination degree.

adelaideuni.edu.au/study/degrees/foundation-studies

Aboriginal and Torres Strait Islander Pathway

Adelaide University is committed to becoming a university of choice for Aboriginal Peoples. Our Aboriginal and Torres Strait Islander Pathway is a fee-free program with no tuition fees. A student services amenities fee applies to all university students which can be deferred through the Federal Government HECS-HELP loan scheme. This program is offered also in regional areas, and provides culturally aware entry options and tailored study support. Like Foundation Studies, the Aboriginal and Torres Strait Islander Pathway is split into three blocks, with a series of entry, exit and transition points that cater to diverse educational backgrounds and your chosen destination degrees.

adelaideuni.edu.au/study/degrees/aboriginal-and-torres-strait-islander-pathway



Block 1: preparatory courses

The Block 1 courses develop your study skills, communication, critical writing, and research, including support in writing academic assignments, referencing and effective time management. These skills and experiences will create a strong foundation for your future at university.

On completion of this program block, you will have developed a comprehensive understanding of the university learning environment and will be able to successfully navigate studying at university. Additionally, you'll be able to communicate effectively in written and oral formats, engage confidently with numeracy, undertake academic research and have developed a tool kit to approach and organise your study.

Block 2 - UniStart: pathway to guaranteed entry degrees

Students who have completed year 11, SACE or a Certificate 3 can enter the Foundation Studies program or Aboriginal and Torres Strait Islander Pathway directly at Block 2 - UniStart.

Block 2 - UniStart extends your engagement with the higher education learning environment and provides foundational knowledge and skill development for your intended destination degree. The courses are designed to develop critical thinking and foster an understanding of university and career pathways while developing foundational knowledge and skills in your chosen discipline.

On completing Block 2 - UniStart, you'll be guaranteed access to a range of accepting degrees, noting that some undergraduate degrees may require a minimum GPA to qualify.

Block 3: pathway to selective entry degrees

Block 3 is designed to provide a pathway for students wanting to enter selected Adelaide University undergraduate degrees. The courses in this block build on the foundational discipline concepts established in Block 2 - UniStart, and will extend your knowledge to help you meet the entry criteria for your chosen degree.

Completing Block 3 qualifies you to apply to selective undergraduate degrees based on your GPA. Some selective undergraduate degrees with limited numbers of professional placements set caps on the intake, and entry may be competitive.

Steps to success

STEP 1

Explore your study options

Researching your study options is an important first step, and there are many different tools and resources available to help you. You could start by reading through this brochure or head online to explore our website:

adelaideuni.edu.au/study

Attending our Open Day is another great way to get a feel for what university life is like and to learn about the range of services available to support you during your university studies. You could also book a time to chat with one of our friendly future student advisors to ask any specific questions you may have.

STEP 3

Apply via SATAC

Applications open in early August for study commencing in the following year. You can apply for your chosen degrees through the SATAC website.

Before you apply, it's a good idea to familiarise yourself with the application process. This includes things like key dates and deadlines for applications, as well as SATAC fees and charges and when to pay. For more information, visit the SATAC website.

Useful links

Find your Adelaide University degree:
adelaideuni.edu.au/study

Have an enquiry:
adelaideuni.edu.au/study/enquire

Scholarships:
adelaideuni.edu.au/study/scholarships

SATAC:
satac.edu.au

STEP 2

Check you meet the eligibility and entry requirements

All degrees have entry requirements—these are specific criteria you have to meet in order to be eligible for entry into a degree. Each degree will have different entry requirements, so it's important to find out what these are for your chosen degree and make sure you can meet them.

Entry requirements can include things like:

- Prerequisites you will need to complete either during your high school (SACE/IB) studies, bridging courses or approved alternatives.
- Assumed knowledge topics that, while not essential for admission into a degree, will help prepare you for many of the topics you'll study during your degree.
- Non-standard entry requirements, such as: attending an interview, undertaking additional assessments (e.g. the UCAT ANZ), performing an audition, submitting a written statement or creative portfolio.

STEP 4

Keep your preferences up to date

As part of your SATAC application, you'll be asked to list up to six preferences—these are the six degrees you are most interested in studying. SATAC makes offers by working down your preference list, so it's important to make sure your first preference is the degree you want to study most.

If you change your mind after you've submitted your application, don't worry! SATAC allows you to check and change your preferences as many times as you want before the cut-off date for your specific offer round. For a list of key dates, visit SATAC's website.

Helpful tip: Be sure to include some 'back up' options on your application. If you need support in choosing the best back up options or pathways into your dream degree, get in touch with our friendly future student advisors.

STEP 5

Check your offer

SATAC run several smaller offer rounds, one main offer round, then continue to make offers in the lead up to the start of the study period you applied for. SATAC makes offers to the highest preference for which you are eligible. This means the degree you most want to study should be your first preference. Remember to check all email folders—including your spam folder—for your offer.

Helpful tip: Didn't receive an offer for your first preference? Don't stress—you could still be considered for future rounds!

STEP 6

Accept your offer

An offer email will be sent to the email address you provided on your SATAC application. If you have received an offer you don't need to respond, as SATAC will accept the offer on your behalf. If you would like to defer your offer until the following year, you will need to log in to your application through the SATAC website and change the response to the 'defer' option.

If the offer you received was for a degree that is not your first preference, SATAC will accept the offer but note that you would still like to be considered for an offer to your higher preference(s).

STEP 7

Welcome to Adelaide University

After accepting your offer, we'll send you an email outlining important information to help you get started at university, including your new university ID number.

At this stage, you can start to plan your timetable, enrol into your courses, attend orientation activities, and begin your university journey.



MEDICAL AND HEALTH SCIENCES



Degrees

Undergraduate

Bachelor of Biomedical and Health Sciences

Bachelor of Clinical Exercise Physiology (Honours)

Bachelor of Dental Surgery

Bachelor of Exercise and Sport Science

Bachelor of Human Movement

Bachelor of Human Nutrition

Bachelor of Laboratory Medicine (Honours)

Bachelor of Medical Radiation Science

Bachelor of Medical Studies, Doctor of Medicine

Bachelor of Midwifery

Bachelor of Nursing

Bachelor of Occupational Therapy (Honours)

Bachelor of Oral Health

Bachelor of Physiotherapy (Honours)

Bachelor of Podiatry (Honours)

Bachelor of Public Health

Bachelor of Speech Pathology (Honours)

100% online

Bachelor of Health Science

Bachelor of Health Service Management

Bachelor of Public Health

Postgraduate

Doctor of Clinical Dentistry

Master of Advanced Clinical Physiotherapy

Master of Medical Sonography

Master of Midwifery

Master of Minimally Invasive Surgery

Master of Nursing

Master of Occupational Therapy

Master of Pharmacy

Master of Physiotherapy

Master of Public Health



In sickness and in health

From preventing disease to promoting wellbeing, healthcare workers are critical to our quality of life. Our degrees are designed in line with industry best practice and incorporate the latest technologies, developments and practices in healthcare.

Supported by our world-class and industry experienced teaching staff, you'll learn how the human body works in sickness and in health. You'll explore the causes, diagnostics and treatments of a range of conditions and build an understanding of how to optimise patient outcomes.

Embedded work integrated learning experiences will provide you with valuable hands-on experience while on campus simulation, virtual and augmented reality learning opportunities will build your confidence in a supportive environment. You'll go beyond the classroom with placement opportunities that will ensure you'll graduate ready to make a difference.

World-class research

Your learning will be informed and supported by world-class research. Adelaide University is home to a number of research centres and institutes that are leading the way in health and medical research, including six National Health and Medical Research Council Centres of Research Excellence. Our internationally renowned and award-winning researchers are at the forefront of a healthier future.

Career prospects

With a predicted global shortage of 10 million health workers by 2030*, there's never been a more critical time to join the healthcare industry. You will be well equipped with the skills and expertise to meet the demand with a degree from Adelaide University.

**2023 WHO Global Monitoring Report*

PSYCHOLOGY



Degrees

Undergraduate

Bachelor of Psychology

Bachelor of Psychology (Honours)

100% online

Bachelor of Community Health

Bachelor of Psychological Sciences and Sociology

Bachelor of Psychology

Postgraduate

Master of Counselling and Psychotherapy

Master of Psychology (Clinical)

Master of Psychology (Health)

Master of Psychology (Organisational)

Master of Science in Addition Studies



Empowering people

Around 30% of Australians experience some form of disadvantage while almost 50% will experience a mental health condition in their lifetime. Skilled professionals are essential in supporting and empowering individuals and communities to improve inclusion and wellbeing.

Guided by our world-class teaching staff you'll discover techniques to develop rapport, ask effective questions, interact with cultural sensitivity and communicate clearly. You'll be supported to develop the skills and knowledge that will enable you to drive improved social outcomes.

You'll access work integrated learning opportunities such as internships and placements while simulated practical learning experiences, utilising public clinics like our Psychology Clinic that will build your knowledge and confidence in a supported environment.

World-class research

Your learning will be informed and supported by world-class research. With on campus research centres like the Behaviour-Brain-Body Research Centre, you'll be at the cutting-edge of real-world breakthroughs.

Career prospects

Healthcare and social assistance has been the primary industry for new jobs within the Australian labour market since the 1990s, and with waitlist for mental health services continuing to climb, the demand for qualified professionals has never been greater.*

**Australian Psychological Society, 2022*



Diploma in Health

Mode: 100% online
Duration: 1 year full-time

Why this degree

Prepare for university study and gain credit towards a bachelor degree in health.

With our 100% online Diploma in Health, you'll be introduced to anatomy, human physiology and biosciences while building core skills like critical thinking and research abilities. Get a personalised learning plan to help you choose health electives to take you closer to your career or study goals.

Receive credit toward a bachelor degree in a health discipline and apply to a wide range of Adelaide University degrees.

Career outcomes

Your diploma in health will give you the core skills to transition into various areas of health. These areas might include:

- Biosciences
- Exercise physiology
- Human movement
- Medical sonography
- Medical radiation science
- Midwifery
- Nursing
- Nutrition and food sciences
- Occupational therapy
- Pharmacy
- Physiotherapy
- Podiatry
- Speech pathology
- Sport sciences.

Bachelor of Biomedical and Health Sciences

Duration: 3 years full-time
Campus: Adelaide City

Why this degree

Interested in learning how the human body works in both health and disease? Study a degree that combines applied health with biomedical sciences and get your career off to a healthy start.

Be at the forefront of scientific discovery by studying a degree that is future focused and industry engaged. Develop in-demand skills that will help you play a part in addressing expected health workforce shortages.

Career outcomes

Your options post-graduation will be endless. You could find yourself developing vaccines, performing diagnostic testing, or conducting laboratory research that solves health challenges.

Career outcomes are diverse and include:

- Clinical trial assistant
- Cardiac physiologist, neurophysiologist or embryologist
- Public health advisor, environmental health officer or health informatics coordinator
- Laboratory research assistant
- Clinical operations manager
- Sales and marketing related to healthcare and diagnostic products.

Bachelor of Biomedical and Health Sciences majors

Bachelor of Biomedical and Health Sciences majoring in Biochemistry

Campus: Adelaide City

The Bachelor of Biomedical and Health Sciences majoring in Biochemistry will help you drive health outcomes at the molecular level and create life-changing outcomes. Benefit from a curriculum that combines biomedical sciences and applied health – so you can explore the human body across both health and disease. Learn from experts in biochemistry and benefit from the latest research and developments in the field. You'll also complete professional placements designed to enhance your clinical skills and provide workplace experience. Graduate with the knowledge you need to be at the forefront of discovery in health.

Bachelor of Biomedical and Health Sciences majoring in Clinical Trials

Campus: Adelaide City

New drugs and treatments are bringing hope to patients with previously untreatable or poorly managed conditions. Clinical trials pave the way for these innovations, deepening our understanding of diseases and helping us develop safe, effective treatments. With a Bachelor of Biomedical and Health Sciences majoring in Clinical Trials, you can be part of this promising new frontier. Develop a solid foundation in human health with a special focus in drug development and testing. Explore the science behind how and why drugs work on the human body. Gain hands-on experience in an industry or research placement and get ready to make a real impact in health and care.

Bachelor of Biomedical and Health Sciences majoring in Genetics

Campus: Adelaide City

Genes are what makes you unique. They are the segments of DNA that create the unique blueprint for who you are. With a Bachelor of Biomedical and Health Sciences majoring in Genetics, you'll unravel the secrets of DNA – the language of life itself. Discover the science that underpins the structure, function, transmission and evolution of genes. Explore the far-reaching impact of genetics across multiple sectors and industries, while considering its ethical implications. Gain practical experience with up to 150 hours of work placements in industry or research settings. Graduate with sought-after skills in health and research, and be ready for a rewarding career in health and biomedicine.

Bachelor of Biomedical and Health Sciences majoring in Medical Science

Campus: Adelaide City

Are you fascinated by how our bodies work? Our bodies are complex but amazing biological machines.

Discover how the human body functions in health and disease with a Bachelor of Biomedical and Health Sciences majoring in Medical Science. Explore anatomy, physiology, pharmacology and pathology – understanding how treatments for diseases are developed and how they work. With your medical science expertise and valuable insights from across the health field, you'll be prepared to make a global impact in health and care.

Bachelor of Biomedical and Health Sciences majors

Bachelor of Biomedical and Health Sciences majoring in Microbiology and Immunology

Campus: Adelaide City

Our Bachelor of Biomedical and Health Sciences majoring in Microbiology and Immunology takes you into a fascinating microscopic world, exploring cells and microbes and their far-reaching impact on individuals and communities. Discover how our bodies respond to bacteria, viruses and parasites. Learn how vaccines and antibiotics are developed and used to prevent, treat and control disease.

Experience a curriculum that merges biomedical sciences and applied health. Engage in world-class research. Customise your studies to match your interests. Follow your passion and become an expert in your field, ready to lead discovery and improve health outcomes.

Bachelor of Biomedical and Health Sciences majoring in Neuroscience

Campus: Adelaide City

If you're fascinated by the inner workings of the brain and its potential, the Bachelor of Biomedical and Health Sciences majoring in Neuroscience is for you. Our degree teaches you everything you need to know about how the nervous system works and communicates. Explore brain development from embryonic stages through to ageing. Investigate how the brain adapts to life experiences and how cognitive training and rehabilitation can improve neuroplasticity. Discover innovative ways to prevent or cure neurological disorders. Neuroscience is a rapidly growing field with endless potential for new discoveries. With your broad health skills and neuroscience expertise, imagine the impact you could make.

Bachelor of Biomedical and Health Sciences majoring in Public Health

Campus: Adelaide City

Help shape the health and wellbeing of our society through a Bachelor of Biomedical and Health Sciences majoring in Public Health. Public health practitioners address social, cultural, commercial and environmental factors that prevent disease and prolong the lifespan of populations. With an emphasis on advocacy and equity, you'll learn to work with communities and organisations across public and private sectors to develop the practical skills needed to address global health challenges.

Bachelor of Biomedical and Health Sciences majoring in Reproductive and Childhood Health

Campus: Adelaide City

Discover the essence of human existence with a Bachelor of Health and Medical Sciences majoring in Reproductive and Childhood Health. Explore how genes and cells create new life and uncover how early experiences shape our health and development. Find out how reproductive technology works and how it can be used to help overcome fertility issues. Whether you are intrigued by the possibility of helping couples to overcome infertility, advancing paediatric healthcare, or contributing to groundbreaking research, you'll have the skills and expertise to prepare you for a fascinating and meaningful career.

Bachelor of Clinical Exercise Physiology (Honours)

Duration: 4 years full-time
Campus: Adelaide City

Why this degree

Clinical exercise physiologists understand how movement – at the right time and intensity – can be its own kind of medicine. Experts on the human body, they design personalised programs to help people with varying health issues and treatment goals achieve an improved quality of life.

As patient-centred approaches to care continue to become the norm, clinical exercise physiologists are a central part of a person's healthcare team. Working alongside doctors, medical specialists, dietitians and more to improve outcomes for their patients. Step into a life-changing career where every day is different.

Career outcomes

As recognised allied health professionals, accredited exercise physiologists are qualified in clinical exercise prescription and the delivery of exercise-based lifestyle and behaviour modification programs to prevent and treat injury and disease. As a clinical exercise physiologist, you could work individually, under supervision of a physician, or as part of an interdisciplinary team in clinical, community, or public health settings.

You might be based in a private physical therapy clinic, guiding clients with injuries through physical exercises to aid their recovery. Maybe you'll work as part of an interprofessional team in a community-based heart health clinic, helping patients integrate consistent exercise as part of their management plan. Perhaps you'll find yourself working in an in-patient rehabilitation ward, developing personalised exercise programs for a wide range of clients hoping to regain mobility and the ability to live independently.

Bachelor of Community Health

Mode: 100% online
Duration: 3 years full-time

Why this degree

Explore your passion for holistic health in this 100% online degree.

Health is one of the fastest growing sectors in Australia, and there is a strong demand for professionals with skills in non-clinical health, policy and wellbeing.

This degree allows you to put your knowledge into practice. You'll work on real-world projects that can make a difference to your local community and beyond. You'll graduate with the skills to pursue career opportunities supporting community health in a range of areas, including disability and ageing.

We have extensive industry connections and partnerships around the world. These connections enable us to design a curriculum that reflects the latest in community health research and practice.

Career outcomes

There are diverse opportunities for community health professionals in not-for-profit, government and private sectors – with excellent career prospects across metropolitan cities, rural and regional areas.

You can find work in community development organisations, welfare centres, social enterprises, neighbourhood houses, emergency relief agencies, home and community care organisations and residential care facilities. You might design substance abuse recovery initiatives in local clinics. You could manage wellness programs in schools. Perhaps you'll develop health strategies for city councils.

Bachelor of Dental Surgery

Duration: 5 years full-time
Campus: Adelaide City

Prerequisite: One SACE Stage 2 Science subject chosen from Chemistry, Mathematical Methods, Specialist Mathematics, or Physics (or equivalent); PLUS an additional SACE Stage 2 Science subject chosen from Biology, Earth and Environmental Science, Chemistry, or Physics (or equivalent).

Assumed knowledge: High proficiency in written and spoken English.

Additional entry requirements: You will be required to take the University Clinical Aptitude Test (UCAT ANZ) and may then be selected for interview based on your test results. If eligible for entry, you will be ranked on your combined UCAT ANZ results (20%), interview (40%) and academic results (40%). Entry is highly competitive.

Why this degree

Keep your community smiling. Become a dentist and play a part in improving oral health in communities. Choose a profession where you'll become a lifelong learner who cares about your patients and your work.

Dentistry is a science and an art. It's flexible, rewarding and it changes lives. Get ready to enhance people's confidence and quality of life by keeping their teeth and gums healthy.

Career outcomes

As a qualified dentist, you'll be ready for your dynamic career in the dental industry. Dental and oral health professionals are well paid and in demand, with job prospects expected to increase.

Your choices may include:

- Private practice: once you are registered with the Dental Board of Australia you can enter private practice on your own, work as an associate with an established practitioner, or join a partnership.
- Public sector: work as a dentist in government, and community or school-based dental clinics across Australia.

You may also consider a career as a researcher, making new discoveries to improve oral health care.

Accreditation

The Bachelor of Dental Surgery is accredited by the Australian Dental Council. To be eligible to work in Australia as a dentist, graduates are required to register with the Australian Health Practitioners Regulation Agency (AHPRA) and the Dental Board of Australia on the completion of the degree. Applicants must also comply with the English language skills requirements as determined by AHPRA.

Bachelor of Exercise and Sport Science

Duration: 3 years full-time
Campus: Adelaide City

Why this degree

Leverage your knowledge of physical activity, health and sports performance.

Want to train elite athletes for the Olympics? Aspire to coach a national team? Maybe you want to lead as a fitness trainer or specialise in rehabilitation? Inspire people to be healthier and more active and perform at their best with a Bachelor of Exercise and Sport Science.

Become a leader in the exciting field of sports science. Discover the long-term positive effects of exercise on people's physical and mental health. Gain knowledge and skills to increase athletic performance and wellbeing. Enhance your networks and relationships with industry to work in a range of positions from sport to aged care.

Career outcomes

Want to use your passion for exercise to transform lives and lead the future of fitness? You could work as a strength and conditioning coach preparing athletes for peak performance. You might work as a health and wellness advisor in the community, promoting exercise, healthy living and nutrition plans. Perhaps you'll become a performance analyst, providing insights for individuals and teams to enhance performance.

Employment opportunities are diverse, and careers could include:

- Physical training specialist
- Strength and conditioning coach
- Performance analyst
- Community sports project officer
- Sports coach
- Rehabilitation specialist
- Exercise and sports science researcher.

Bachelor of Health Science

Mode: 100% online
Duration: 3 years full-time

Why this degree

Work at the heart of healthcare and improve the wellbeing of communities.

Gain the skills to drive real change. Understand the intricate workings of the human body and health systems. Master project management, health promotion and research. Learn to design life-saving health campaigns or lead initiatives that improve the wellbeing of entire communities.

Whether you're designing health campaigns or working in community development, this flexible degree opens doors to a wide range of career paths.

Your journey to a rewarding career in health begins here.

Career outcomes

With a Bachelor of Health Science, you could become a health promotion officer, creating strategies to enhance community health. Or perhaps you'll work as a health project officer, leading important health initiatives and managing project timelines and budgets.

You might find yourself in a health science writer role, producing engaging content about health topics for various audiences and platforms. Alternatively, you could be a health support worker, assisting clients from diverse backgrounds in various settings.

As a graduate, you'll have the skills to pursue a range of opportunities and roles in:

- Healthcare
- Community organisations
- Government.

Bachelor of Health Science (Healthy Ageing)

Mode: 100% online
Duration: 3 years full-time

Why this degree

Do you want to make a real and meaningful impact on the lives of older Australians? Are you ready to shape better health outcomes and improve the way we transition through life's stages?

Our specialised qualification in healthy ageing is backed by world-class research, industry experience and a foundation of generalist health science knowledge. You'll be empowered to pursue a rewarding career across a wide range of healthcare roles, influencing health systems and social policy.

You'll explore innovative and creative ways to support individuals as their needs evolve. Discover how nutrition, medicine and social connectivity can enhance wellbeing. Learn about psychology concepts related to ageing, and wellbeing practices for different demographics of people throughout the lifespan.

Career outcomes

A career in the healthcare industry is flexible, diverse and opens up endless opportunities to make a meaningful impact on people's wellbeing and quality of life. Specialising your skill set in meeting the needs of Australians who are older will give you the competitive edge to step into a field experiencing rapid growth and evolution. You'll be well prepared for a career as a leader in a frontline service, helping individuals transition into the next stage of their life with dignity.

Our Bachelor of Health Science (Healthy Ageing) will allow you to pursue a career pathway in a range of healthcare roles.

Bachelor of Health Science (Nutrition and Exercise)

Mode: 100% online
Duration: 3 years full-time

Why this degree

Diabetes, cardiovascular disease and metabolic dysfunction are increasingly common. This calls for informed nutrition and exercise practitioners who can help with both prevention and treatment.

The Bachelor of Health Science (Nutrition and Exercise) is a 100% online degree that builds your skills in two highly complementary fields. Promote nutrition and exercise for preventative health while inspiring a healthy and active society.

If you have a passion for nutrition and exercise and love helping people – this degree is for you.

Career outcomes

As a health professional, your career opportunities will be varied. You'll be equipped to work in federal, state and local government, the not-for-profit sector, private enterprise, and community and health agencies. Or, in a hospital, university or a health research institute.

You might be a public health educator, designing workshops to promote healthy eating and exercise habits for communities. You could be a corporate wellness adviser, running programs to help businesses optimise employee health. Perhaps you'll be self-employed as a health coach, supporting individuals to reach their personal wellness goals.

You may decide to specialise in particular client groups such as the elderly or high performing athletes.

Bachelor of Health Service Management

Mode: 100% online
Duration: 3 years full-time

Why this degree

Lead health and community wellbeing.

With Australia's increasing demand for quality health services, skilled leaders in this industry have a promising career ahead.

Build a solid foundation for success with our online Bachelor of Health Service Management. Learn about business development, entrepreneurship, people management and marketing and how they apply to health services. Cultivate key skills in health service policy planning and promotion. Understand how social, cultural and economic factors influence contemporary health problems worldwide.

You'll graduate ready to make an impact in the lives of individuals and communities as a health care leader.

Career outcomes

Australia is facing a growing demand for high-quality health services – driven by an increase in chronic health conditions, the impacts of urbanisation and population growth as well as a population that is living longer.

Our online Bachelor of Health Service Management is designed to meet this growing workforce need. It offers a variety of career paths for those keen to contribute to the efficiency and equity of healthcare across Australia.

Bachelor of Human Movement majoring in Human Nutrition

Duration: 3 years full-time
Campus: Adelaide City

Why this degree

Help clients master the building blocks of health.

What we eat and how often we move both wield enormous influence over the quality of our overall health and wellbeing. In Australia, one-third of the total disease burden is caused by modifiable health behaviours – in other words, diet and exercise (AIHW, 2021).

Human movement professionals draw knowledge from human anatomy, physiology, biomechanics, biology and more to understand the role of movement and its influence on enhancing health and wellbeing. They work with clients of all ages and abilities, developing tailored programs to help clients achieve improvements in their fitness and wellbeing.

Be a source of knowledge and inspiration for others and support people to lead healthier lives.

Career outcomes

This degree builds both practical and scientific skills, giving you valuable versatility in the job market. You'll gain capabilities in movement analysis, exercise prescription and nutritional planning – opening doors in both health and fitness sectors.

You could lead corporate wellness programs, working to improve employee wellbeing. You might coordinate health and wellbeing events for a city council or a university. Perhaps you'll start your own nutrition or fitness business.

You could also be a:

- Health promotion officer
- Human movement practitioner
- Sports and fitness nutritionist
- Community nutritionist
- Nutrition and food policy advisor
- Community and allied health worker
- Health and wellbeing nutrition advisor
- Sport development officer
- Youth sports coordinator.

Or, go on to complete a master's in human movement and nutrition to expand your career opportunities and potential impact in the field.

Bachelor of Human Movement majoring in Secondary Health and Physical Education

Duration: 3 years full-time
Campus: Adelaide City

Why this degree

Movement is crucial for humans. It's not just good for our physical health; it boosts our mood and helps us manage stress better. Competitive sports can be lifechanging for people of all ages – but especially young people in our community.

For those with an interest in health and a passion for helping others, there are important roles you can pursue nurturing individual and public wellbeing. You'll be equipped to work with people in clubs, camps and community centres. Your expertise will be valued – and needed.

Support individuals to grow and succeed. Instil healthy habits early in young people's lives. Help them access skills, community and personal growth through sport and movement.

Career outcomes

You'll graduate with specialised knowledge and practical skills in human health and physical education. This will ensure a strong foundation – and a competitive edge – for the Master of Teaching at Adelaide University.

Even without further study, however, you'll be qualified for a range of fun and impactful roles supporting community health. You could be an outdoor education instructor, leading adventure tours for schools, corporate teams or clubs. You might be a coach in a community sports program. Perhaps you'll work for a local youth organisation like Youth Inc. SASY, Whitelion or Youth Opportunities, helping young people reach their goals and undertake action-learning in the real world.

You could also be a:

- Youth sports coordinator
- Health promotion officer
- Human movement practitioner
- Community and allied health worker
- Wellness coach
- Corporate program coordinator
- Sport development officer
- Recreational program manager
- Adventure therapy facilitator.

Bachelor of Human Movement majoring in Sport Coaching

Duration: 3 years full-time
Campus: Adelaide City

Why this degree

Discover the power of movement and inspire others to lead healthier, more active lives. Apply different exercise techniques to improve the overall fitness and mental health of athletes and sporting teams. Design training programs tailored to the needs and goals of individuals or teams, focusing on technique, strategy and physical conditioning.

With hands-on experience and world-class educators, you'll be ready for a career as a health and physical activity teacher, human movement practitioner or sports coach.

Whether you're planning activities for communities, schools or individuals, you'll gain the knowledge needed to make a lasting impact.

Shape your future and inspire others.

Career outcomes

You might work a sports coach, developing an athlete's physical and mental strength. You could become a performance analyst, using data and technology to fine-tune performance for elite teams. Perhaps you'll work as a physical activity coordinator, designing and delivering fitness programs to improve community health.

Whether coaching a school team, supporting professional athletes or shaping health policy, this degree leads to diverse careers that make a lasting impact on individuals and communities.

Bachelor of Human Nutrition

Duration: 3 years full-time
Campus: Adelaide City, Waite

Why this degree

Food is more than just fuel. It's an integral part of our lives, affecting our health and our happiness. But people's relationships with food can be complicated. And with so many food choices available, how do we know what's best to eat?

Discover how cultural, environmental and social factors can influence our eating habits. Learn how to plan menus, design specialised diets and practise food safety. Explore the latest nutrition research findings. Investigate the relationship between diet and exercise and the importance of nutrition for a sport athlete's performance. Imagine – one day you might be on staff at the Olympics, helping elite athletes to optimise their nutrition to achieve peak performance.

With our Bachelor of Human Nutrition, you'll graduate ready to help people understand the role that nutrition can play in improving their relationship with food and leading a healthier life.

Career outcomes

A degree in nutrition opens doors to a huge variety of fulfilling careers. You might work with kids who are picky eaters, broadening their palates and horizons. You could work in health promotion to help communities improve their diet and health become a hospital nutritionist, designing diet plans to help patients recover faster. You might work in public health, implementing programs and policies to promote healthy eating and exercise. Perhaps you'll embrace science and research – finding new ways to combat world hunger.

Other roles could include:

- Nutritionist
- Health promotion
- Sports nutritionist
- Community health worker
- Health coach
- Food quality and safety manager
- Nutrition educator
- Health coach
- Nutrition science researcher.

Bachelor of Laboratory Medicine (Honours)

Duration: 4 years full-time
Campus: Adelaide City
Prerequisites: Any one of SACE Stage 2 Physics, Biology or Chemistry (or equivalent).

Why this degree

Make the diagnosis that could save lives as an accredited medical laboratory scientist.

Medical laboratory scientists play a significant role in Australia's health system. Working in diagnostic pathology laboratories across Australia, they support clinicians by diagnosing, managing and treating diseases through testing patient samples, conducting research into the causes and cures of disease, and developing improved methods for disease detection. The skilled professionals who analyse, interpret and report on this data are crucial in helping clinicians and their patients make informed, timely and life-saving treatment decisions. They also play a critical role in shaping public health initiatives, including disease prevention efforts and developing new diagnostic tests.

Apply your inquisitive and analytical mind in a career where you can make a real and lasting impact.

Career outcomes

As a medical laboratory scientist, you'll support clinicians in the diagnosis, management and treatment of disease. You may recommend treatments, monitor dosage and effects, and track the progress of patients. Medical laboratory scientists also play a pivotal role in making new medical discoveries, developing improved tests for disease detection and shaping public health initiatives.

You might be based in hospital, conducting diagnostic tests on blood and bodily fluids to monitor how patients are responding to treatment. Perhaps you'll be employed by a pharmaceutical company, helping develop and prepare new types of medicines for clinical trials.

Medical laboratory scientists are employed in a wide range of areas, including:

- Clinical biochemistry
- Cytology
- Diagnostic pathology
- Forensic science
- Haematology
- Histopathology
- Immunology
- Medical microbiology
- Product manufacturing
- Public health and health management
- Research
- Transfusion science
- Veterinary medicine
- Virology.

Bachelor of Medical Radiation Science (Honours) majoring in Medical Imaging

Duration: 4 years full-time
Campus: Adelaide City

Why this degree

Want to enter the dynamic world of medical imaging? Become an essential part of advancing healthcare. Deliver life-changing outcomes, blending your expertise in technology and your natural compassion.

As a diagnostic radiographer, you'll master the use of x-rays, fluoroscopy, and emergency imaging. Monitor and diagnose injuries and illnesses. Develop key communication and teamwork skills. Work alongside healthcare professionals to provide exceptional patient care.

Your skills will be vital in delivering accurate diagnoses and supporting patient recovery.

Career outcomes

There is strong demand for medical imaging professionals in Australia and globally. You may work in a hospital, private clinic, or medical equipment company. You might pursue a research role and contribute to advancements in diagnostic techniques. Or you could specialise further with additional training and move into areas like MRI, CT, or sonography.

As a medical imaging professional, you'll work closely with both patients and technology. Play a vital role in patient care and help diagnose and monitor a wide range of health conditions.

With further study or training, you can advance into specialised roles such as:

- Interventional radiographer
- MRI technologist
- CT radiographer
- Sonographer.

A successful career in medical imaging requires a passion for helping others, a love of technology, and an interest in the human body.

Accreditation

Graduates are eligible for registration with the Australian Health Practitioner Regulation Agency (AHPRA).

Bachelor of Medical Radiation Science (Honours) majoring in Nuclear Medicine

Duration: 4 years full-time
Campus: Adelaide City

Why this degree

Dreaming of a career where you can use cutting-edge technology to diagnose and treat life-threatening diseases? Be a key player in a healthcare team. Prepare and administer radioactive substances (radiopharmaceuticals). Master state-of-the-art equipment.

Turn your passion for science and patient care into a powerful career. Learn to evaluate organ function and contribute to life-changing medical treatments.

Make a difference in patients' lives and help shape the future of healthcare, ensuring earlier diagnoses and more effective treatments. By joining this dynamic field, you'll not only impact individual patients but also help advance the future of medicine.

Career outcomes

Ready to make a difference in the world of nuclear medicine? With your degree, you can step into a high-demand field where your skills are sought after both locally and internationally.

Using advanced imaging technologies like PET scans you can diagnose and treat diseases. You can find work in hospitals, private clinics, or medical equipment companies.

With further study or training, you can advance into specialised roles such as:

- MRI technologist
- CT technologist
- Sonographer.

A successful career in nuclear medicine requires a passion for helping others, a love of technology and an interest in the human body.

Accreditation

Graduates are eligible for registration with the Australian Health Practitioner Regulation Agency (AHPRA).

Bachelor of Medical Radiation Science (Honours) majoring in Radiation Therapy

Duration: 4 years full-time
Campus: Adelaide City

Why this degree

Join the frontline of cancer treatment, using cutting-edge technology to save lives and offer hope.

As global cancer rates rise, radiation therapists are in high demand worldwide. Master advanced imaging techniques, treatment planning, and patient care. Develop critical thinking and problem-solving skills. Learn to operate state-of-the-art equipment like linear accelerators and CT scanners.

Radiation therapy is a field where compassion meets innovation, allowing you to make a profound impact on patient lives.

With the global need for cancer care growing, your expertise will be valued across cultures, connecting you to a worldwide community of healers.

Career outcomes

With a degree in radiation therapy, you'll enter a high-demand field, both in Australia and internationally.

Work with advanced technology to deliver life-saving treatments, primarily for cancer patients. You might collaborate with radiation oncologists and medical physicists to plan and deliver precise radiation therapies. Perhaps you'll pursue a research-focused role and conduct clinical trials on new radiation therapy techniques. Or you could move into an educational role and train new radiation therapy students or provide continuing education for practicing therapists.

Your career could lead you to other specialised roles like:

- Paediatric radiation therapist
- MRI technologist
- Brachytherapy specialist
- Sonographer
- Radiation oncology researcher.

Work with the latest technology, be an essential part of a dynamic team, and make a meaningful impact on patient lives.

Accreditation

Graduates are eligible for registration with the Australian Health Practitioner Regulation Agency (AHPRA).

Bachelor of Medical Studies, Doctor of Medicine

Duration: 3 + 3 years full-time
Campus: Adelaide City

Prerequisite: Any one of SACE Stage 2 Biology or Chemistry or Mathematical Methods (or equivalent).

Assumed knowledge: High proficiency in written and spoken English.

Additional entry requirements: You will be required to take the University Clinical Aptitude Test (UCAT ANZ) and may then be selected for interview based on your test results. If eligible entry, you will be ranked on your combined UCAT ANZ results (20%), interview (40%) and academic results (40%). Entry is highly competitive.

Why this degree

Put your passion for healing into action. Medicine is intellectually rewarding, challenging and inspiring. It requires critical problem-solving, teamwork and integrity.

Medical practitioners are passionately interested in wellbeing, working to protect and promote the health of individuals and communities. They are dedicated to alleviating pain and suffering and caring for vulnerable people.

Join a profession where you'll play a critical role in helping people live full and active lives and be a part of a remarkable health culture.

Career outcomes

This degree forms the first part of the broader medicine program; upon successful completion, you'll gain direct entry into the Doctor of Medicine. Together, these degrees will qualify you to practise medicine anywhere in Australia and throughout most of the world.

As a medical graduate, you'll be in demand for positions in a variety of settings including:

- Public hospitals
- Private practice
- Public health
- Teaching
- Clinical research
- Aid organisations
- The defence forces.

Graduates from this degree can also consider roles such as health educator, health officer, laboratory manager, medical scientist and medical technician.

Accreditation

Upon completion of the Bachelor of Medical Studies and Doctor of Medicine, you will apply for provisional registration with the Australian Health Practitioner Regulation Agency (AHPRA). Provisional registration is required to undertake a 12-month internship which provides supervised clinical experience in an approved hospital. After successful completion of the internship, you will be eligible to apply to AHPRA for general registration, allowing you to practise in Australia and New Zealand.

Bachelor of Midwifery

Duration: 3 years full-time
Campus: Adelaide City, Mount Gambier or Whyalla

Why this degree

As a midwife, you will be a trusted guide, mentor, and source of strength during one of life's most profound experiences.

You'll support women and their families through every stage of pregnancy, birth, and beyond – witnessing the arrival of new life while offering essential care and wisdom in the critical postnatal period. Your guidance will empower new parents with the confidence and skills they need to thrive in their new roles.

You'll be there for one of the most significant moments in a family's life. Long after the mother and baby have returned home, your compassion, expertise and dedication will be remembered.

Career outcomes

As a midwife, you'll lead the way in maternity care, providing women with expert guidance and reassurance throughout their pregnancies. During birth, you'll play a hands-on role, actively ensuring the safety and wellbeing of both mother and baby. In the crucial days that follow, you'll continue to support women and their families, helping them navigate the early stages of caring for their newborn.

As a midwife, you'll have opportunities to work in group practices, providing care to women within caseload models. You could offer family planning support, guide women through pregnancy and birth in a hospital setting, or assist with home births.

Roles are available in multidisciplinary healthcare teams in a range of settings, including:

- Community services
- Public or private hospitals
- Rural and remote healthcare
- Home-based services
- Health agencies
- Midwifery education
- Research
- Private practice.

Bachelor of Nursing

Duration: 3 years full-time
Campus: Adelaide City, Mount Gambier or Whyalla

Why this degree

Nurses are at the heart of our hospitals and health sector. They play a vital role in meeting today's complex and evolving health needs.

Whether it's at the height of a pandemic or delivering community care, nurses make a difference by providing quality treatment and support.

Get ready to put yourself at the forefront of patient care and develop your skills in this rewarding and growing field.

Career outcomes

Be ready to embark on a career as a registered nurse, working at the forefront of a dynamic and vital industry.

Your career options as a healthcare professional will be extensive. You could provide patient care in a variety of settings, including:

- Public or private hospitals
- Community support services
- Aged and rehabilitative care
- Schools
- Home care
- Drug and alcohol treatment centres
- Community health organisations
- Mental health services
- International aid agencies
- Corrections facilities
- Management.

Accreditation

This degree meets the Nursing and Midwifery Board of Australia (NMBA) registered nurse standards for practice (2016). As a graduate, this means you'll be eligible to become a registered nurse in Australia.

Bachelor of Occupational Therapy (Honours)

Duration: 4 years full-time
Campus: Adelaide City or Whyalla

Why this degree

Occupational therapists empower people and communities to develop and maintain the capabilities needed to participate in the daily activities that make a meaningful life. They use therapeutic techniques to help people regain, improve and sustain their everyday functional abilities.

If you love working with people and are a strong, empathetic individual, this is the career for you.

Help people reach their goals. Integrate knowledge from different fields, including psychology, anatomy and sociology. Embark on a personally fulfilling career, making a real difference for your clients' quality of life.

Our Bachelor of Occupational Therapy (Honours) will give you a competitive edge to stand out in the workforce.

Career outcomes

Be ready to make a difference in people's lives as an occupational therapist. You could work with people recovering from injury, surgery or illness, such as a stroke or a traumatic event. You might work with children to overcome developmental delays, allowing them to participate in their most important activities. You could work with communities addressing injustice and advocating for better policies that promote health and human rights. Maybe you'll work in research or academia, identifying the latest developments in occupational therapy.

You could find employment in a range of settings, including:

- Aged care facilities
- Ambulatory and rehabilitation services
- Community mental health services
- Government departments
- Home based services
- Public and private hospitals
- Private practice
- Schools.

As an occupational therapist, some of your daily tasks may include:

- Assessing the daily living needs of people
- Designing and implementing interventions to assist with daily living activities
- Supporting educational participation
- Encouraging leisure and play
- Enabling social participation
- Facilitating work (paid and voluntary).

Bachelor of Oral Health

Duration: 3 years full-time
Campus: Adelaide City

Prerequisites: Any 20-credit SACE Stage 2 Tertiary Admission Subject from the Mathematics or Science Learning Areas.

Assumed Knowledge: High proficiency in written and spoken English.

Additional entry requirements: You will be required to take the University Clinical Aptitude Test (UCAT ANZ) and may then be selected for interview based on your test results. If eligible entry, you will be ranked on your combined UCAT ANZ results (20%), interview (40%) and academic results (40%). Entry is highly competitive.

Why this degree

If eyes are the window to your soul, your mouth is a window to overall health. Teeth and gums are essential for speaking and eating, but they also reveal broader health issues. Neglecting them can lead to serious conditions like heart disease, strokes or chest infections.

Become a guardian of wellbeing by studying oral health. You'll support dental hygiene, provide oral health therapies and maintenance, and promote good dental habits that last a lifetime.

Catch dental problems before they become serious. Relieve pain and discomfort. Restore confidence and reduce the burden on our healthcare system. Contribute to a healthier and fairer society where everyone gets the dental care they need.

Ready to make people smile?

Career outcomes

As an oral health therapist, you'll play a key role in dental teams, delivering high quality clinical care to people of all ages.

You might create personalised care plans for people with gum disease. Perhaps you'll work on improving dental care accessibility in remote communities – or develop innovative educational programs to teach primary school students the importance of good dental hygiene. You might even start your own oral health clinic with the talented dental professionals you meet during your time at Adelaide University.

Potential career paths include:

- Oral health therapy
- Dental therapy and hygiene
- Health promotion and education
- Paediatric to geriatric dentistry
- Health administration
- Aboriginal and Torres Strait Islander health studies
- Special needs dentistry
- Dental research.

This degree also opens the door to further postgraduate studies.

Bachelor of Pharmaceutical Science

Duration: 3 years full-time
Campus: Adelaide City
Prerequisites: SACE Stage 2 Biology, Chemistry or Physics (or equivalent).

Why this degree

Curious how medications are developed, tested and brought to market? Study the only degree of its kind in South Australia and unlock your potential in pharmaceutical science.

Discover the intersection between chemistry, biology and biotechnology and improve the quality of life for millions of people worldwide. Work with cutting-edge research to save lives and revolutionise healthcare. Be at the forefront of medical innovation and begin your career discovering and formulating critical medicines. Develop important skills through hands-on learning, preparing you to explore a range of work environments. With the world in need of essential medicines, are you ready to make a difference?

Career outcomes

Our degree, and your passion for science, technology and solving problems, will set you on the path to improving human health. You might perform clinical trials to test the efficiency of medicines in patients. You could research and develop new drugs and medicines. Perhaps you'll focus on the marketing and sales of medicines for human and veterinary use.

Your employment opportunities will be diverse, including:

- Product developer/formulation scientist
- Medicinal chemist
- Quality assurance
- Biomedical researcher
- Pharmaceutical sales
- Medicine regulation
- Clinical trials research associate.

Bachelor of Pharmacy (Honours)

Duration: 4 years full-time
Campus: Adelaide City
Prerequisites: SACE Stage 2 Biology, Chemistry or Physics (or equivalent).

Why this degree

Explore the fascinating ways that medicines work – and how they interact with the human body. Learn how to evaluate and administer medications that heal and protect.

Pharmacists are an important member of any healthcare team. They provide expert patient care and ensure medicines enhance health outcomes with minimal side effects. Step into one of the world's most trusted professions. Compound medicines, analyse drug interactions and create your own formulations. You'll be the go-to expert on medications and a key player in improving public health.

Make a difference in people's lives with a Bachelor of Pharmacy (Honours) – one prescription at a time.

Career outcomes

Pharmacists are medicine experts in healthcare teams, with expanding clinical roles and new therapeutic developments offering more career options than ever.

Growth in Australia's pharmacy profession continues to look strong, with increasing roles in aged care, primary care, healthcare policy and the pharmaceutical industry.

You can work in settings across:

- Hospitals
- Local pharmacies
- GP practices
- Aged care settings
- Defence services
- Infectious disease services
- Compounding or critical care services.

You might work with space agencies to develop medications useable in zero gravity, helping astronauts stay healthy on long missions. You could become a part of drug discovery and development, creating the next breakthrough medication. Perhaps you'll specialise in children's medications, finding ways to make medicines easier to administer to young patients.

Accreditation

Graduates of the Bachelor of Pharmacy (Honours) can apply for provisional registration with the Pharmacy Board of Australia. To become a registered pharmacist, you'll need to undertake the Pharmacy Intern Training Program (ITP).

Bachelor of Physiotherapy (Honours)

Duration: 4 years full-time
Campus: Adelaide City or Whyalla

Assumed Knowledge: SACE Stage 2 Biology and Physics (or equivalent).

Why this degree

Movement is medicine for the body and mind. But every person is different, with their own unique challenges and vulnerabilities. Skilled physiotherapists understand this – and can offer life-changing, personalised support.

Our Bachelor of Physiotherapy (Honours) gives you the knowledge and tools to excel in this rewarding field, with patient-centred care at the heart of your practice.

Discover how the human body works. Get extensive hands-on experience. Connect with industry experts. Stay on your toes in an active, people-focused profession. Help your clients reach their full potential and lead healthy, functional lives.

Career outcomes

Physiotherapists can work across management, administration, education, research, policy development, advisory and regulatory contexts. They can take on roles in:

- Private practice
- Sport and exercise services
- Rehabilitation centres
- Hospitals
- Home and community services
- Disability services
- Aged care facilities
- Women's health and paediatric services
- Occupational and health promotion units
- Research.

You might work on a cruise ship, keeping travellers safe and limber at sea. You could provide on-site physiotherapy services for office workers. Perhaps you'll be head physio for the Australian Olympic Team.

Or you could pursue a career as a:

- Rehabilitation specialist
- Disability analyst
- Paediatric physio
- Cardiac rehabilitation specialist
- Continence and women's health physio
- Health service manager
- Aquatic physio.

You will also be well-prepared for further postgraduate study, such as a Master of Research or Master of Advanced Clinical Physiotherapy specialising in Sports or Musculoskeletal.

Bachelor of Podiatry (Honours)

Duration: 4 years full-time
Campus: Adelaide City

Assumed Knowledge: SACE Stage 2 Biology or equivalent.

Why this degree

Kickstart your allied health career. For many of us, our feet are just tools that help us get around. When working as expected, we hardly think about them. But did you know that our feet can be the first to show signs of health problems?

Podiatrists are not only experts in foot, ankle and lower limb health but can assess and manage a broad range of lower limb conditions, including diabetes, arthritis, gait issues, skin and toenail concerns, and identify circulatory neurological issues that impact our feet and lower leg function.

Step confidently into a career, where every day brings opportunities to change lives for the better.

Career outcomes

With patient-centred care at the heart of your practice, you'll graduate prepared to meet the full breadth of the podiatry profession including surgery, sports injuries and related biomechanics, paediatrics and high-risk foot conditions. Career paths are endless, and you can truly design your career to align with your professional and personal goals. Podiatrists can opt to work as an individual care provider in private practice or as part of an interdisciplinary healthcare team based in a clinical or community healthcare setting.

You might be based in a private podiatry clinic, helping clients with a variety of chronic conditions maintain good foot care practice. Maybe you'll work as part of an interprofessional team in a hospital, helping assess, diagnose and treat complex and high-care patients. Perhaps you'll find yourself specialising in paediatric podiatry, developing treatment plans and creating specialised orthotics to meet the varying needs of this unique patient population.

Bachelor of Psychological Sciences and Sociology

Mode: 100% online
Duration: 3 years full-time

Why this degree

The world needs people who understand people.

With an ageing population, and the continuous review of systems like the National Disability Insurance Scheme (NDIS), emerging professionals in Australia need to be able to adapt to changing environments.

With this 100% online degree, you can gain a complementary and much-needed skillset. You'll have a competitive advantage in human services, psychology, counselling, social and community services, and community healthcare.

Gain insights into human behaviour and resilience. Find roles in government and not-for-profit organisations. Lead efforts to support vulnerable populations, address social inequalities, advocate for change, and build stronger communities.

Career outcomes

Professionals with knowledge in both psychology and sociology are better equipped to solve real-world issues. You can apply your interdisciplinary knowledge to support individuals and communities in leading happier, healthier and more independent lives.

You could work one-on-one with individuals or families. You might collaborate with small to medium communities such as neighbourhoods, schools and support groups. Perhaps you'll find your calling on a larger scale, advocating for policy changes on behalf of clients, organisations or governments.

Bachelor of Psychology

Mode: 100% online
Duration: 3 years full-time

Why this degree

Want a meaningful career in a field that truly helps others? A psychology degree opens up exciting options for your future.

You'll study everything from cognitive development to learning and behaviour modification and about psychological health and disorders, gaining advanced insights into how people function.

Explore the science behind human behaviour. Learn how to analyse thought patterns, emotions and actions. Develop the skills to make a real impact, whether through research, counselling or community services.

You'll graduate ready to support individuals and communities to not just live well, but flourish.

Career outcomes

With a psychology degree, you can support individuals and communities in meaningful and life-changing ways.

You might become a counsellor, helping people navigate life's challenges. You could work in community services, providing essential support to those in need. Maybe you'll contribute to innovative research, exploring human behaviour and improving mental health outcomes.

You can also apply your expertise in fields like marketing, business, advertising, criminal justice, education, healthcare, and the sustainability sector. Or, find work in human resources, where you can use your insights to improve workplace dynamics among staff.

You can also go on to complete further specialised postgraduate study to deepen your skills and career prospects in the field.

Bachelor of Psychology

Duration: 3 years full-time
Campus: Adelaide City, Magill

Why this degree

Why do people act the way they do? What makes one person behave in one way, and another completely differently? With psychology, you'll unravel these mysteries and more. It's not just about mental health – it's about understanding human behaviour in every corner of society.

Discover how history, society and culture shape our views of ourselves and others. Learn to gather and apply evidence, separating fact from fiction in today's digital age of misinformation. Deepen your active listening and empathy with practical experiences that bring theory to life. Embrace the richness of cross-cultural psychology, developing skills to work with people from diverse backgrounds.

Our Bachelor of Psychology prepares you for a huge range of exciting careers where people are at the centre of everything you do.

Career outcomes

With its focus on understanding human behaviour, our Bachelor of Psychology provides an exceptional foundation for work in a diverse range areas.

You might work in community and welfare services, improving outcomes for vulnerable people and their communities. You might research attitudes and consumer behaviour, guiding organisations to adopt more sustainable practices. You may work in a tech start-up that is pushing boundaries with new human-device technology, helping to streamline the user experience.

Other areas you might work include:

- Politics and governance
- Marketing
- Social work
- Global relations
- Health care and therapy
- Human resources

If you wish to become a registered psychologist, further study is required through our Bachelor of Psychology (Honours).

Bachelor of Psychology majors

**Bachelor of Psychology
majoring in Cognitive Neuroscience**

Campus: Adelaide City, Magill

Investigate the relationship between the brain and human behaviour. Cognitive psychology blends psychology and biology to explain how we process thoughts, memories, languages and actions. Discover developmental psychology, data science, psychological research methods, human biology, language development and more.

Through Adelaide University's Bachelor of Psychology majoring in Cognitive Neuroscience, you'll be prepared for a variety of fulfilling careers centred around human interaction.

**Bachelor of Psychology
majoring in Counselling and Interpersonal Skills**

Campus: Adelaide City, Magill

Great counsellors are a light in the dark, helping people through some of life's most challenging experiences. While psychology takes a broad approach to human behaviour – examining why people think and act the way they do – counselling offers tailored support to help individuals address specific issues.

Through our Bachelor of Psychology majoring in Counselling and Interpersonal Skills, you'll get the best of both worlds. You'll gain a sound knowledge of psychology, as well as the analytical, communication and interpersonal skills needed for a meaningful career enhancing the wellbeing of individuals, groups and communities.

Bachelor of Psychology (Honours)

Duration: 4 years full-time
Campus: Adelaide City, Magill

Why this degree

For as long as humans have lived, we've sought to understand ourselves and others in a deeper way.

Psychology explores thoughts, emotions, behaviour and the connections between the three. It aims to understand how people act and think in various situations. It also examines how different therapeutic approaches may help people to better navigate tough times and make desired life changes.

Becoming a psychologist in Australia involves completing a minimum six-year sequence of study to obtain registration. Our four-year Bachelor of Psychology (Honours) is your first step on the path towards registration. It also opens the door to a number of psychology-related careers.

Career outcomes

To become a psychologist in Australia, you must complete a minimum six-year sequence of study to achieve registration. The first step on this journey is completing our four-year Bachelor of Psychology (Honours), followed by additional postgraduate study.

Alternatively, the strong understanding in human behaviour gained through our Bachelor of Psychology (Honours) provides an exceptional foundation for work in a diverse range of areas where an understanding of human behaviour is key.

Maybe you'll take on a community caseworker role, improving outcomes for vulnerable people and their communities. You could work as a change management consultant, applying your insights to assess the potential impacts and opportunities for organisational change. Or perhaps you'll research attitudes and consumer behaviour as a market analyst, helping businesses develop new strategies for reaching their target audiences.

Other areas you might work include:

- Politics and governance
- Marketing
- Social work
- Global relations
- Health care and therapy
- Human resources.

Bachelor of Psychology (Honours) majors

**Bachelor of Psychology (Honours)
majoring in Cognitive Neuroscience**

Campus: Adelaide City, Magill

Understand the psychology and biology of the human brain.

Explore why we think, feel and behave the way we do. Learn how our brains process information. Gain a dual expertise in cognitive psychology and neuroscience. Put your skills into practice in our dedicated campus facilities. Apply your knowledge in real-world environments.

You'll graduate ready to step into exciting careers supporting many industries' most valuable asset – its human workforce. Your honours year will teach you advanced research skills and equip you for professional practice, as well as being the first step down the path to becoming a registered psychologist.

**Bachelor of Psychology (Honours)
majoring in Counselling and Interpersonal Skills**

Campus: Adelaide City, Magill

Great counsellors are a light in the dark, helping people through some of life's most challenging experiences. While psychology takes a broad approach to human behaviour – examining why people think and act the way they do – counselling offers tailored support to help individuals address specific issues.

The Bachelor of Psychology majoring in Counselling and Interpersonal Skills gives you the best of both worlds. You'll gain a sound knowledge of psychology, as well as the analytical, communication and interpersonal skills needed for a meaningful career enhancing the wellbeing of individuals, groups and communities.

Bachelor of Public Health

Mode: 100% online
Duration: 3 years full-time

Why this degree

Pursue a career saving lives with this 100% online degree.

Public health is about supporting the wellbeing and resilience of populations. It touches on all aspects of health: preventing disease, addressing health disparities and empowering communities with knowledge.

As a public health practitioner, you can make a real difference to the world around you. You'll be at the forefront of taking action to address global challenges like pandemics, climate change, natural disasters, ageing populations, food security, social disadvantage and chronic disease.

Decipher hidden patterns in health data. Pinpoint people at risk. Design targeted interventions. Give educated advice on health policy. Do more for your community – with your community.

Career outcomes

There are so many employment opportunities in public health. You can find roles in grassroots community agencies and all levels of government. You could work locally, with groups like the Heart Foundation or Cancer Council. Or abroad in humanitarian and refugee settings, with international aid organisations like the World Health Organization, UNICEF, UNIAID and the Red Cross.

You could lead nutrition literacy initiatives, developing educational campaigns and tools. You might work in remote Aboriginal communities. Perhaps you'll collaborate with urban planners to design healthier cities – or be at the forefront of disease management and prevention as South Australia's Chief Public Health Officer.

Bachelor of Public Health

Duration: 3 years full-time
Campus: Adelaide City

Why this degree

Become an advocate for longer and healthier lives for everyone. Public health does much more than prevent illnesses. It also helps us understand why some populations have better or poorer health outcomes than others. It guides society with strategies and policies to support and promote health and wellbeing for everyone's benefit.

Studying public health means exploring the many factors that influence wellbeing. You'll use research techniques and practice-based skills to investigate big issues in health today. You'll learn how to develop and deliver policy and promotion initiatives to improve the health and wellbeing of communities and populations.

By understanding health on a local and global scale, you'll graduate ready to contribute to all areas of public health.

Career outcomes

Public health practitioners are experts in supporting the health and wellbeing of communities and populations, with deep knowledge of health and inter-related systems, and in the experience of health across diverse population groups. You'll graduate ready to join Australia's growing and in-demand health workforce with broadly applicable skills in collaboration, communication, analysis, planning, and project management.

You might work in government, communicating new research to the public and keeping people safe during health crises. You could collaborate on projects in remote Aboriginal settings, develop initiatives to support youth mental health, or contribute to improving access to health services for LGBTQIA+ communities. Perhaps you'll lead major campaigns in Australia – whether it's educating youth and parents on strategies for social media use that support better mental health or reducing the risk of skin cancer through a catchy jingle.

You could also be a:

- Public health research officer
- NGO worker
- Epidemiologist/data analyst
- Clinical studies coordinator
- Community development officer
- Health promotion practitioner
- Policy officer
- Workplace health coordinator.

Bachelor of Speech Pathology (Honours)

Duration: 4 years full-time
Campus: Adelaide City

Why this degree

Support and empower people of all ages to connect with others and participate in life. As humans, we are innately social, our lives revolve around connecting with others through communication in work and play and eating and drinking. So, what happens when we find it difficult to communicate? Or an illness makes it hard for us to eat and drink safely?

Conditions that cause difficulties with communication or eating and drinking can affect anyone, at any stage of the lifespan. Speech pathologists diagnose and treat these difficulties, determining the most appropriate intervention to help people achieve their goals.

Learn how to transform lives through the power of communication and grow in a career where you'll make a difference every day.

Career outcomes

Talented speech pathologists are already highly sought after, and demand is growing fast. As a certified speech pathologist, you'll have the freedom to pursue a wide range of career opportunities in diverse of settings – including private practice, community health services, educational settings, hospitals, rehabilitation services, aged care settings, corrections and more.

You could help children with disabilities or developmental delays connect with their peers by improving communication skills and opportunities for social interaction. Perhaps you'll help a person who has had a stroke to improve their ability to eat and communicate or support a patient in end-of-life care. Maybe you'll enable adults with acquired or traumatic brain injuries to communicate with others. You could even work as part of a therapeutic team striving towards a person's goal of gaining employment.

Careers and study

Careers

Our contemporary, future-focused degrees have been developed in consultation with industry to provide you with both the broad and specialised skills and knowledge needed in the modern workplace. You'll graduate as an ethical leader, global citizen and lifelong learner capable of resilient thinking, strategic problem solving and trusted communication, ready to take on a world of opportunities.

Degree	Possible career outcomes	Further study options
Diploma in Health	<ul style="list-style-type: none"> Community health officer Public health officer 	<ul style="list-style-type: none"> Bachelor of Health Science Bachelor of Community Health
Bachelor of Biomedical and Health Sciences	<ul style="list-style-type: none"> Clinical operations manager Environmental health officer Laboratory research assistant 	<ul style="list-style-type: none"> Master of Science
Bachelor of Clinical Exercise Physiology (Honours)	<ul style="list-style-type: none"> Exercise physiologist Rehabilitation officer 	
Bachelor of Community Health	<ul style="list-style-type: none"> Aged care coordinator Disability support coordinator Lead community health worker 	<ul style="list-style-type: none"> Master of Public Health
Bachelor of Dental Surgery	<ul style="list-style-type: none"> Dentist Researcher 	<ul style="list-style-type: none"> Doctor of Clinical Dentistry
Bachelor of Exercise and Sport Science	<ul style="list-style-type: none"> Community sports project officer Exercise and sport science researcher Rehabilitation specialist Strength and conditioning coach 	
Bachelor of Health Science	<ul style="list-style-type: none"> Community health officer Health project officer Health promotion officer 	
Bachelor of Health Service Management	<ul style="list-style-type: none"> Health promotion officer Public health administrator Practice manager 	
Bachelor of Human Nutrition	<ul style="list-style-type: none"> Community health worker Food quality and safety manager Nutritionist 	
Bachelor of Human Movement	<ul style="list-style-type: none"> High performance sports manager Sport development officer Youth sports coordinator 	
Bachelor of Laboratory Medicine (Honours)	<ul style="list-style-type: none"> Clinical biochemist Diagnostic pathology officer Medical laboratory scientist 	
Bachelor of Medical Radiation Science (Honours)	<ul style="list-style-type: none"> CT technologist MRI technologist Sonographer 	
Bachelor of Medical Studies, Doctor of Medicine	<ul style="list-style-type: none"> Clinical researcher Laboratory Manager Medical scientist Doctor (further study is required) 	<ul style="list-style-type: none"> Doctor of Medicine

Degree	Possible career outcomes	Further study options
Bachelor of Midwifery	<ul style="list-style-type: none"> • Community health officer • Midwife • Researcher 	<ul style="list-style-type: none"> • Master of Midwifery
Bachelor of Nursing	<ul style="list-style-type: none"> • Registered nurse • Health administrator • Mental health worker 	<ul style="list-style-type: none"> • Master of Nursing
Bachelor of Occupational Therapy (Honours)	<ul style="list-style-type: none"> • Occupational therapist • Rehabilitation specialist 	<ul style="list-style-type: none"> • Master of Occupational Therapy
Bachelor of Oral Health	<ul style="list-style-type: none"> • Dental hygienist • Health administrator • Oral health therapist 	
Bachelor of Pharmacy (Honours)	<ul style="list-style-type: none"> • Pharmacist (further study required) 	<ul style="list-style-type: none"> • Master of Pharmacy
Bachelor of Pharmaceutical Science	<ul style="list-style-type: none"> • Clinical trial researcher • Medicinal chemist • Quality assurance officer 	
Bachelor of Physiotherapy (Honours)	<ul style="list-style-type: none"> • Physiotherapist • Disability analyst • Rehabilitation specialist 	<ul style="list-style-type: none"> • Master of Physiotherapy
Bachelor of Podiatry (Honours)	<ul style="list-style-type: none"> • Podiatrist • Community healthcare officer 	
Bachelor of Psychological Sciences and Sociology	<ul style="list-style-type: none"> • Community service officer • Human resources adviser • Welfare officer 	<ul style="list-style-type: none"> • Master of Psychology (Health) • Master of Psychology (Organisational and Human Factors)
Bachelor of Psychology	<ul style="list-style-type: none"> • Community services officer • Counsellor • Mental health worker 	<ul style="list-style-type: none"> • Master of Psychology (Health) • Master of Psychology (Organisational and Human Factors)
Bachelor of Psychology (Honours)	<ul style="list-style-type: none"> • Community services officer • Counsellor • Mental health worker • Psychologist (further study is required) 	<ul style="list-style-type: none"> • Master of Psychology (Clinical) • Master of Psychology (Health) • Master of Psychology (Organisational and Human Factors)
Bachelor of Public Health	<ul style="list-style-type: none"> • Community development officer • Health promotion practitioner • Workplace health coordinator 	<ul style="list-style-type: none"> • Master of Public Health
Bachelor of Speech Pathology (Honours)	<ul style="list-style-type: none"> • Speech pathologist • Allied health therapist 	

Prerequisites, assumed knowledge or other entry requirements

At Adelaide University we aim to place higher education in reach of students from all walks of life. Only a small number of our undergraduate degrees have prerequisites, assumed knowledge or additional entry requirements.

Degree	Prerequisites	Assumed knowledge	Additional entry requirements
Bachelor of Dental Surgery	Two science subjects from the following: any one of SACE Stage 2 Chemistry, Mathematical Methods, Specialist Mathematics, or Physics (or equivalent); PLUS any one of SACE Stage 2 Biology, Earth and Environmental Science, Chemistry, or Physics (or equivalent).	High proficiency in written and spoken English.	You will be required to take the University Clinical Aptitude Test (UCAT ANZ) and may then be selected for interview based on your test results. If eligible for entry, you will be ranked on your combined UCAT ANZ results (20%), interview (40%) and academic results (40%). Entry is highly competitive.
Bachelor of Laboratory Medicine (Honours)	Any one of SACE Stage 2 Physics, Biology or Chemistry (or equivalent).	None	None
Bachelor of Medical Studies, Doctor of Medicine	Any one of SACE Stage 2 Biology or Chemistry or Mathematical Methods (or equivalent).	High proficiency in written and spoken English.	You will be required to take the University Clinical Aptitude Test (UCAT ANZ) and may then be selected for interview based on your test results. If eligible for entry, you will be ranked on your combined UCAT ANZ results (20%), interview (40%) and academic results (40%). Entry is highly competitive.
Bachelor of Oral Health	Any 20-credit SACE Stage 2 Tertiary Admission Subject from the Mathematics or Science Learning Areas.	High proficiency in written and spoken English.	You will be required to take the University Clinical Aptitude Test (UCAT ANZ) and may then be selected for interview based on your test results. If eligible for entry, you will be ranked on your combined UCAT ANZ results (20%), interview (40%) and academic results (40%). Entry is highly competitive.
Bachelor of Pharmacy (Honours)	SACE Stage 2 Biology, Chemistry or Physics (or equivalent).	None	None
Bachelor of Pharmaceutical Science	SACE Stage 2 Biology, Chemistry or Physics (or equivalent).	None	None
Bachelor of Physiotherapy (Honours)	None	SACE Stage 2 Biology and Physics (or equivalent)	None
Bachelor of Podiatry (Honours)		SACE Stage 2 Biology or equivalent.	
Bachelor of Human Movement, Master of Teaching (Secondary)	Bachelor degree must be successfully completed prior to entering the Master of Teaching (Secondary) degree.	The Master of Teaching (Secondary) assumes that you have knowledge in subject areas in which you intend to teach that align with the Australian Curriculum.	Master of Teaching (Secondary) requires you to submit a 400-600 word Teaching Capabilities Statement (TCS) outlining your motivation to teach, and a successful Working with Children Check (WWCC) obtained through the Department of Human Services.
Bachelor of Pharmacy (Honours), Master of Pharmacy	SACE Stage 2 Biology, Chemistry or Physics (or equivalent). Prior to entering the Master of Pharmacy degree you must: <ul style="list-style-type: none"> Successfully complete the Bachelor of Pharmacy Obtain or apply for provisional registration through the Australian Health Practitioner Regulation Agency (AHPRA). Arrange supervised practice (internship) approved by the Pharmacy Board of Australia 		

2026 Degrees

Campuses: Adelaide City = AC / Mawson Lakes = ML / Magill = M
Mount Gambier = MG / Roseworthy = RW / Whyalla = W / Waite = WT

Study centres: PL = Port Lincoln / C = Ceduna

Pathways: L = Limited / L* = Limited as quotas apply

	Page reference	Program length (yrs)	Campus	Prerequisites	Assumed knowledge	Start date	Guaranteed Entry	Mode	Pathway programs	Graduate Certificate/ Diploma available
PREPARATORY PROGRAMS										
Foundation Studies	18	1	AC OR MG OR W OR PL OR C	N	N	Feb, July	NA	On campus	Y	NA
Aboriginal and Torres Strait Islander pathway	18	1	AC OR MG OR W OR PL OR C	N	N	Feb	NA	On campus	Y	NA
BUSINESS AND LAW										
Bachelor of Business	29	3	AC	N	N	Feb, July	70	On campus	Y	NA
Bachelor of Business majoring in Digital Business	30	3	AC	N	N	Feb, July	70	On campus	Y	NA
Bachelor of Business majoring in Human Resource Management	30	3	AC	N	N	Feb, July	70	On campus	Y	NA
Bachelor of Business majoring in Innovation, Entrepreneurship and Strategy	30	3	AC	N	N	Feb, July	70	On campus	Y	NA
Bachelor of Business majoring in International Business	30	3	AC	N	N	Feb, July	70	On campus	Y	NA
Bachelor of Business majoring in Management	31	3	AC	N	N	Feb, July	70	On campus	Y	NA
Bachelor of Business majoring in Marketing	31	3	AC	N	N	Feb, July	70	On campus	Y	NA
Bachelor of Business majoring in Marketing and Communication	31	3	AC	N	N	Feb, July	70	On campus	Y	NA
Bachelor of Business majoring in Marketing and Design	31	3	AC	N	N	Feb, July	70	On campus	Y	NA
Bachelor of Business majoring in Procurement and Supply Chain Management	31	3	AC	N	N	Feb, July	70	On campus	Y	NA
Bachelor of Business majoring in Project Management	32	3	AC	N	N	Feb, July	70	On campus	Y	NA
Bachelor of Business majoring in Real Estate	32	3	AC	N	N	Feb, July	70	On campus	Y	NA
Bachelor of Business majoring in Sport Management	32	3	AC	N	N	Feb, July	70	On campus	Y	NA
Bachelor of Business majoring in Tourism, Events and Hospitality Management	32	3	AC	N	N	Feb, July	70	On campus	Y	NA
Bachelor of Commerce majoring in Accounting	33	3	AC	N	N	Feb, July	80	On campus	Y	NA
Bachelor of Commerce majoring in Banking and Finance	33	3	AC	N	N	Feb, July	80	On campus	Y	NA
Bachelor of Commerce majoring in Business Analytics	34	3	AC	N	N	Feb, July	80	On campus	Y	NA
Bachelor of Commerce majoring in Financial Planning	34	3	AC	N	N	Feb, July	80	On campus	Y	NA
Bachelor of Commerce majoring in Property	35	3	AC	N	N	Feb, July	80	On campus	Y	NA
Bachelor of Criminology and Criminal Justice	36	3	AC, M	N	N	Feb, July	70	On campus	Y	NA
Bachelor of Criminology and Criminal Justice majoring in Aboriginal Studies	36	3	AC, M	N	N	Feb, July	70	On campus	Y	NA
Bachelor of Criminology and Criminal Justice majoring in Anthropology	36	3	AC, M	N	N	Feb, July	70	On campus	Y	NA
Bachelor of Criminology and Criminal Justice majoring in Gender and Sexuality Studies	36	3	AC, M	N	N	Feb, July	70	On campus	Y	NA
Bachelor of Criminology and Criminal Justice majoring in History	37	3	AC, M	N	N	Feb, July	70	On campus	Y	NA
Bachelor of Criminology and Criminal Justice majoring in International Security	37	3	AC, M	N	N	Feb, July	70	On campus	Y	NA
Bachelor of Criminology and Criminal Justice majoring in Politics	37	3	AC, M	N	N	Feb, July	70	On campus	Y	NA
Bachelor of Criminology and Criminal Justice majoring in Population and Migration Studies	37	3	AC, M	N	N	Feb, July	70	On campus	Y	NA
Bachelor of Criminology and Criminal Justice majoring in Social Research and Policy Analysis	37	3	AC, M	N	N	Feb, July	70	On campus	Y	NA
Bachelor of Criminology and Criminal Justice majoring in Sociology	37	3	AC, M	N	N	Feb, July	70	On campus	Y	NA
Bachelor of Economics	39	3	AC	N	N	Feb, July	70	On campus	Y	NA
Bachelor of Economics majoring in Advanced Analysis	39	3	AC	N	N	Feb, July	70	On campus	Y	NA
Bachelor of Economics (Honours)	40	4	AC	N	N	Feb, July	80	On campus	Y	NA
Bachelor of Laws (Honours)	41	4	AC	N	N	Feb, July	NA	On campus	Y	NA
Bachelor of Outdoor Environment Leadership	43	3	AC	N	N	Feb, July	70	On campus	Y	NA
Bachelor of Philosophy, Politics and Economics	43	3	AC	N	N	Feb, July	70	On campus	Y	NA
DOUBLE DEGREES AND PACKAGED DEGREES										
Bachelor of Commerce with a major in Accounting, Master of Teaching (Secondary)	-	4	AC / AC, ML, G, W	N	N	Feb, July	NA	On campus	Y	NA
Bachelor of Economics, Bachelor of Commerce	-	4	AC	N	N	Feb, July	NA	On campus	Y	NA
Bachelor of Law (Honours), Bachelor of Arts	41	5	AC, M	N	N	Feb, July	NA	On campus	Y	NA
Bachelor of Law (Honours), Bachelor of Business	41	5	AC	N	N	Feb, July	NA	On campus	Y	NA
Bachelor of Law (Honours), Bachelor of Commerce	41	5	AC	N	N	Feb, July	NA	On campus	Y	NA
Bachelor of Law (Honours), Bachelor of Criminology and Criminal Justice	41	5	AC, M	N	N	Feb, July	NA	On campus	Y	NA
Bachelor of Law (Honours), Bachelor of Economics	42	5	AC	N	N	Feb, July	NA	On campus	Y	NA
Bachelor of Law (Honours), Bachelor of Economics (Honours)	42	6	AC	N	N	Feb, July	NA	On campus	Y	NA
Bachelor of Law (Honours), Bachelor of International Relations	42	5	AC, M	N	N	Feb, July	NA	On campus	Y	NA
Bachelor of Law (Honours), Bachelor of Journalism	42	5	M, AC	N	N	Feb, July	NA	On campus	Y	NA
Bachelor of Law (Honours), Bachelor of Psychology	42	5	AC, M	N	N	Feb, July	NA	On campus	Y	NA
Bachelor of Law (Honours), Bachelor of Sustainability and Climate Change	42	5	AC, M	N	N	Feb, July	NA	On campus	Y	NA
100% ONLINE DEGREES										
Diploma in Digital Business	38	1	Online	N	N	1,2,3,4	NA	100% online	Y	N
Bachelor of Accounting	26	3	Online	N	N	1,2,3,4	NA	100% online	Y	NA

Campuses: Adelaide City = AC / Mawson Lakes = ML / Magill = M
 Mount Gambier = MG / Roseworthy = RW / Whyalla = W / Waite = WT

Study centres: PL = Port Lincoln / C = Ceduna

Pathways: L = Limited / L* = Limited as quotas apply

	Page reference	Program length (yrs)	Campus	Prerequisites	Assumed knowledge	Start date	Guaranteed Entry	Mode	Pathway programs	Graduate Certificate/ Diploma available
Bachelor of Business (Economics, Finance and Trade)	26	3	Online	N	N	1,2,3,4	NA	100% online	Y	NA
Bachelor of Business (Financial Planning)	27	3	Online	N	N	1,2,3,4	NA	100% online	Y	NA
Bachelor of Business (Human Resource Management)	27	3	Online	N	N	1,2,3,4	NA	100% online	Y	NA
Bachelor of Business (Management)	28	3	Online	N	N	1,2,3,4	NA	100% online	Y	NA
Bachelor of Business (Marketing)	28	3	Online	N	N	1,2,3,4	NA	100% online	Y	NA
Bachelor of Business (Tourism, Events and Hospitality Management)	29	3	Online	N	N	1,2,3,4	NA	100% online	Y	NA
Bachelor of Criminology and Criminal Justice	35	3	Online	N	N	1,2,3,4	NA	100% online	Y	NA
Bachelor of Digital Business	38	3	Online	N	N	1,2,3,4	NA	100% online	Y	N
Bachelor of International Business	40	3	Online	N	N	1,2,3,4,5,6	NA	100% online	Y	NA
Graduate Certificate in Business Administration	-	0.5	Online	Y	Y	1,2,3,4,5,6	NA	100% online	Y	GD, M
Graduate Certificate in Business (Digital Transformation)	-	0.5	Online	N	N	1,2,3,4	NA	100% online	Y	N
Graduate Diploma in Business Administration	-	1	Online	Y	Y	1,2,3,4,5,6	NA	100% online	Y	GC, M
Master of Business Administration	-	1.5	Online	N	N	1,2,3,4,5,6	NA	100% online	Y	N
Master of Business Administration (Health Management)	-	1.5	Online	N	N	1,2,3,4,5,6	NA	100% online	Y	N
POSTGRADUATE DEGREES										
Global Executive Master of Business Administration (Defence and Space)	-	1.5	AC	N	N	Feb, July	NA	On campus	Y	GC, GD
Master of Accounting and Business Analytics	-	2	AC	N	Y	Feb, July	NA	On campus	Y	N
Master of Accounting	-	2	AC	N	N	Feb, July	NA	On campus	Y	N
Master of Accounting and Finance	-	2	AC	N	Y	Feb, July	NA	On campus	Y	N
Master of Applied Finance	-	1.5	AC	N	N	Feb, July	NA	On campus	Y	N
Master of Business Administration	54	1.5	AC	N	N	Feb, July	NA	On campus	Y	N
Master of Business Analytics	54	2	AC	N	Y	Feb, July	NA	On campus	Y	N
Master of Economics and Resource Policy	-	2	AC	N	N	Feb, July	NA	On campus	Y	N
Master of Environmental Policy and Management	-	2	AC	N	N	Feb, July	NA	On campus	Y	N
Master of Finance	-	2	AC	N	Y	Feb, July	NA	On campus	Y	N
Master of Finance and Business Analytics	-	2	AC	N	Y	Feb, July	NA	On campus	Y	N
Master of Financial Planning	-	2	AC	N	Y	Feb, July	NA	On campus	Y	N
Master of Health Services Management	-	2	AC	N	N	Feb, July	NA	On campus	Y	N
Master of Human Resource Management	-	2	AC	N	N	Feb, July	NA	On campus	Y	N
Master of Information Management	-	2	AC	N	N	Feb, July	NA	On campus	Y	N
Master of International Business	55	2	AC	N	N	Feb, July	NA	On campus	Y	N
Master of International and Security Law	-	2	AC	N	N	Feb, July	NA	On campus	Y	N
Master of Laws	55	2	AC	N	N	Feb, July	NA	On campus	Y	N
Master of Management	-	2	AC	N	N	Feb, July	NA	On campus	Y	N
Master of Marketing	-	2	AC	N	N	Feb, July	NA	On campus	Y	N
Master of Professional Accounting	-	1.5	AC	N	Y	Feb, July	NA	On campus	Y	N
Master of Project Management	-	2	AC	N	N	Feb, July	NA	On campus	Y	N
Master of Procurement and Supply Chain Management	-	2	AC	N	N	Feb, July	NA	On campus	Y	N
Master of Tourism, Events and Hospitality Management	-	2	AC	N	N	Feb, July	NA	On campus	Y	N
Master of Wine and Food Business	-	2	AC	N	N	Feb, July	NA	On campus	Y	N
COMPUTER SCIENCE/IT AND MATHEMATICS										
Bachelor of Computer Science	26	3	AC, ML	Y	N	Feb, July	80	On campus	Y	NA
Bachelor of Computer Science majoring in Artificial Intelligence and Machine Learning	27	3	AC, ML	Y	N	Feb, July	80	On campus	Y	NA
Bachelor of Computer Science majoring in Human-Centred Computing	27	3	AC, ML	Y	N	Feb, July	80	On campus	Y	NA
Bachelor of Computer Science majoring in Programming Languages	27	3	AC, ML	Y	N	Feb, July	80	On campus	Y	NA
Bachelor of Computer Science (Honours)	28	4	AC, ML	Y	N	Feb, July	80	On campus	Y	NA
Bachelor of Computer Science (Honours) majoring in Artificial Intelligence and Machine Learning	29	4	AC, ML	Y	N	Feb, July	80	On campus	Y	NA
Bachelor of Computer Science (Honours) majoring in Human-Centred Computing	29	4	AC, ML	Y	N	Feb, July	80	On campus	Y	NA
Bachelor of Computer Science (Honours) majoring in Programming Languages	29	4	AC, ML	Y	N	Feb, July	80	On campus	Y	NA
Bachelor of Cyber Security	30	3	AC, ML	N	N	Feb, July	80	On campus	Y	NA
Bachelor of Cyber Security majoring in Governance, Risk, and Compliance	30	3	AC, ML	N	N	Feb, July	80	On campus	Y	NA
Bachelor of Cyber Security majoring in Technology	30	3	AC, ML	N	N	Feb, July	80	On campus	Y	NA
Bachelor of Information Technology	33	3	AC, ML	N	N	Feb, July	70	On campus	Y	NA
Bachelor of Information Technology majoring in Data Analytics	33	3	AC, ML	N	N	Feb, July	70	On campus	Y	NA
Bachelor of Information Technology majoring in Games Development	33	3	AC, ML	N	N	Feb, July	70	On campus	Y	NA
Bachelor of Information Technology majoring in Networking and Cyber Security	34	3	AC, ML	N	N	Feb, July	70	On campus	Y	NA

Campuses: Adelaide City = AC / Mawson Lakes = ML / Magill = M
 Mount Gambier = MG / Roseworthy = RW / Whyalla = W / Waite = WT

Study centres: PL = Port Lincoln / C = Ceduna

Pathways: L = Limited / L* = Limited as quotas apply

	Page reference	Program length (yrs)	Campus	Prerequisites	Assumed knowledge	Start date	Guaranteed Entry	Mode	Pathway programs	Graduate Certificate/ Diploma available
Bachelor of Information Technology majoring in Software Development	34	3	AC, ML	N N	N	Feb, July	70	On campus	Y	NA
Bachelor of Mathematics	34	3	AC, ML	Y N	N	Feb, July	70	On campus	Y	NA
Bachelor of Mathematics majoring in Applied Mathematics	35	3	AC, ML	Y N	N	Feb, July	70	On campus	Y	NA
Bachelor of Mathematics majoring in Data Science	35	3	AC, ML	Y N	N	Feb, July	70	On campus	Y	NA
Bachelor of Mathematics majoring in Pure Mathematics	35	3	AC, ML	Y N	N	Feb, July	70	On campus	Y	NA
Bachelor of Mathematics majoring in Statistics	35	3	AC, ML	Y N	N	Feb, July	70	On campus	Y	NA
Bachelor of Mathematics (Honours)	36	4	AC, ML	Y N	N	Feb, July	80	On campus	Y	NA
Bachelor of Mathematics (Honours) majoring in Applied Mathematics	36	4	AC, ML	Y N	N	Feb, July	80	On campus	Y	NA
Bachelor of Mathematics (Honours) majoring in Data Science	36	4	AC, ML	Y N	N	Feb, July	80	On campus	Y	NA
Bachelor of Mathematics (Honours) majoring in Pure Mathematics	37	4	AC, ML	Y N	N	Feb, July	80	On campus	Y	NA
Bachelor of Mathematics (Honours) majoring in Statistics	37	4	AC, ML	Y N	N	Feb, July	80	On campus	Y	NA
Bachelor of Software Engineering (Honours) (Apprenticeship)	38	4	AC, ML	N N	N	Feb, July	80	On campus	Y	NA
Bachelor of Software Engineering (Honours)	38	4	AC, ML	N N	N	Feb, July	80	On campus	Y	NA
DOUBLE DEGREES AND PACKAGED DEGREES										
Bachelor of Mathematics, Master of Teaching (Secondary)	-	4.5	AC, ML	N N	N	Feb, July	NA	On campus	Y	NA
100% ONLINE DEGREES										
Associate Degree in Data Analytics	31	2	Online	N N	N	1,2,3,4	NA	100% online	Y	Y
Associate Degree in Information Technology	32	2	Online	N N	N	1,2,3,4	NA	100% online	Y	N
Bachelor of Data Analytics	31	3	Online	N N	N	1,2,3,4	NA	100% online	Y	N
Bachelor of Information Technology	32	3	Online	N N	N	1,2,3,4	NA	100% online	Y	N
Graduate Certificate in Cyber Security	-	0.5	Online	N Y	Y	1,2,3,4,5,6	NA	100% online	Y	N
Graduate Certificate in Data Science (Applied)	-	0.5	Online	N Y	Y	1,2,3,4,5,6	NA	100% online	Y	GD
Graduate Diploma in Cyber Security	-	1	Online	N Y	Y	1,2,3,4,5,6	NA	100% online	Y	N
Graduate Diploma in Data Science (Applied)	-	1	Online	N Y	Y	1,2,3,4,5,6	NA	100% online	Y	GC
Master of Cyber Security	-	1.5	Online	N Y	Y	1,2,3,4,5,6	NA	100% online	Y	N
Master of Data Science (Applied)	-	2	Online	N Y	Y	1,2,3,4,5,6	NA	100% online	Y	N
POSTGRADUATE DEGREES										
Master of Artificial Intelligence and Machine Learning	50	2	AC	N N	N	Feb, July	NA	On campus	Y	N
Master of Biostatistics	-	1.5	AC	N Y	Y	Feb, July	NA	On campus	Y	GC, GD
Master of Computer Science	50	2	AC	N N	N	Feb, July	NA	On campus	Y	N
Master of Data Science	51	2	AC, ML	N N	N	Feb, July	NA	On campus	Y	N
Master of Information Technology (various specialisations)	-	2	AC, ML	N N	N	Feb, July	NA	On campus	Y	N
Master of Mathematical Sciences specialising in Artificial Intelligence	51	2	AC, ML	N Y	Y	Feb	NA	On campus	Y	GC, GD
Master of Statistics	-	2	AC, ML	N N	N	Feb	NA	On campus	Y	GC, GD
CREATIVITY										
Bachelor of Architectural Design	28	3	AC	N N	N	Feb, July	70	On campus	Y	NA
Bachelor of Architectural Design majoring in Urban Planning	28	3	AC	N N	N	Feb, July	70	On campus	Y	NA
Bachelor of Creative Arts	29	3	AC, M	N N	N	Feb, July	70	On campus	Y	NA
Bachelor of Creative Arts majoring in Comicbook Creation	29	3	AC, M	N N	N	Feb, July	70	On campus	Y	NA
Bachelor of Creative Arts majoring in Creative Industries	29	3	AC, M	N N	N	Feb, July	70	On campus	Y	NA
Bachelor of Creative Arts majoring in Creative Writing	29	3	AC, M	N N	N	Feb, July	70	On campus	Y	NA
Bachelor of Creative Arts majoring in Digital Media and Web Design	30	3	AC, M	N N	N	Feb, July	70	On campus	Y	NA
Bachelor of Creative Arts majoring in Festivals	30	3	AC, M	N N	N	Feb, July	70	On campus	Y	NA
Bachelor of Creative Arts majoring in Games Design and Production	30	3	AC, M	N N	N	Feb, July	70	On campus	Y	NA
Bachelor of Creative Arts majoring in Immersive Media	30	3	AC, M	N N	N	Feb, July	70	On campus	Y	NA
Bachelor of Creative Arts majoring in Performing Arts	30	3	AC, M	N N	N	Feb, July	70	On campus	Y	NA
Bachelor of Creative Arts majoring in Screen Production	30	3	AC, M	N N	N	Feb, July	70	On campus	Y	NA
Bachelor of Film and Television	31	3	M, AC	N N	N	Feb, July	70	On campus	Y	NA
Bachelor of Fine Arts	31	3	AC, M	N N	N	Feb, July	80	On campus	Y	NA
Bachelor of Graphic Communication Design	32	3	AC, M	N N	N	Feb, July	70	On campus	Y	NA
Bachelor of Illustration and Animation	32	3	AC, M	N N	N	Feb, July	70	On campus	Y	NA
Bachelor of Industrial Design	33	3	AC, M	N N	N	Feb, July	70	On campus	Y	NA
Bachelor of Interior Architecture (Honours)	33	4	AC	N N	N	Feb, July	70	On campus	Y	NA
Bachelor of Music majoring in Classical Performance	34	3	AC	N N	N	Feb, July	80	On campus	Y	NA
Bachelor of Music majoring in Creative Practice	34	3	AC	N N	N	Feb, July	80	On campus	Y	NA
Bachelor of Music majoring in Jazz Performance	35	3	AC	N N	N	Feb, July	80	On campus	Y	NA

Campuses: Adelaide City = AC / Mawson Lakes = ML / Magill = M
 Mount Gambier = MG / Roseworthy = RW / Whyalla = W / Waite = WT

Study centres: PL = Port Lincoln / C = Ceduna

Pathways: L = Limited / L* = Limited as quotas apply

	Page reference	Program length (yrs)	Campus	Prerequisites	Assumed knowledge	Start date	Guaranteed Entry	Mode	Pathway programs	Graduate Certificate/ Diploma available
Bachelor of Music majoring in Music Education	35	3	AC	N	N	Feb, July	80	On campus	Y	NA
Bachelor of Music (Honours) majoring in Classical Performance	36	4	AC	N	N	Feb, July	80	On campus	Y	NA
Bachelor of Music (Honours) majoring in Creative Practice	36	4	AC	N	N	Feb, July	80	On campus	Y	NA
Bachelor of Music (Honours) majoring in Jazz Performance	37	4	AC	N	N	Feb, July	80	On campus	Y	NA
Bachelor of Music (Honours) majoring in Music Education	37	4	AC	N	N	Feb, July	80	On campus	Y	NA
Bachelor of Music (Honours) majoring in Musicology	38	4	AC	N	N	Feb, July	80	On campus	Y	NA
Bachelor of Music Theatre	38	3	AC	N	N	Feb	80	On campus	Y	NA
Bachelor of Visual Effects	39	3	AC, M	N	N	Feb, July	70	On campus	Y	NA
DOUBLE DEGREES AND PACKAGED DEGREES										
Bachelor of Architectural Design, Master of Architecture	-	5	AC	N	N	Feb, July	NA	On campus	Y	NA
Bachelor of Architectural Design, Master of Landscape Architecture	-	5	AC	N	N	Feb, July	NA	On campus	Y	NA
Bachelor of Architectural Design majoring in Urban Planning, Master of Urban Design	-	4	AC	N	N	Feb, July	NA	On campus	Y	NA
Bachelor of Creative Arts, Master of Teaching (Secondary)	-	4	AC, M / AC, ML	N	N	Feb, July	NA	On campus	Y	NA
Bachelor of Music, Master of Teaching (Secondary)	-	4	AC, M	N	N	Feb, July	NA	On campus	Y	NA
POSTGRADUATE DEGREES										
Graduate Certificate in 3D Animation	50	0.5	AC	N	Y	Feb, July	NA	On campus	Y	N
Graduate Certificate in Creature Effects	-	0.5	AC	N	Y	Feb, July	NA	On campus	Y	N
Graduate Certificate in Compositing and Tracking	-	0.5	AC	N	Y	Feb, July	NA	On campus	Y	N
Graduate Certificate in Dynamic Effects and Lighting	-	0.5	AC, Brisbane (Rising Sun)	N	Y	Feb, July	NA	On campus	Y	N
Graduate Certificate in Film and Television	-	0.5	M	N	Y	Feb	NA	On campus	Y	N
Master of Architecture	50	2	AC	N	N	Feb, July	NA	On campus	Y	N
Master of Design	-	2	AC	N	N	Feb, July	NA	On campus	Y	GD
Master of Immersive Media Technologies	51	2	AC	N	N	Feb	NA	On campus	Y	GC, GD
Master of Landscape Architecture	-	2	AC	N	N	Feb, July	NA	On campus	Y	N
Master of Music (Performance and Pedagogy)	-	2	AC	N	N	Feb, July	NA	On campus	Y	GD
Master of Music (Performance Studies)	51	2	AC	N	N	Feb, July	NA	On campus	Y	GD
Master of Urban and Regional Planning	-	2	AC	N	N	Feb, July	NA	On campus	Y	GC, GD
EDUCATION, MEDIA AND HUMANITIES										
Bachelor of Arts	30	3	AC, M	N	N	Feb, July	70	On campus	Y	NA
Bachelor of Arts majoring in Aboriginal Studies	30	3	AC, M	N	N	Feb, July	70	On campus	Y	NA
Bachelor of Arts majoring in Anthropology	30	3	AC, M	N	N	Feb, July	70	On campus	Y	NA
Bachelor of Arts majoring in Archaeology and Classical Studies	30	3	AC, M	N	N	Feb, July	70	On campus	Y	NA
Bachelor of Arts majoring in Art History and Visual Culture	31	3	AC, M	N	N	Feb, July	70	On campus	Y	NA
Bachelor of Arts majoring in Chinese Studies	31	3	AC, M	N	N	Feb	70	On campus	Y	NA
Bachelor of Arts majoring in Creative Writing	31	3	AC, M	N	N	Feb, July	70	On campus	Y	NA
Bachelor of Arts majoring in Cultural Studies	31	3	AC, M	N	N	Feb, July	70	On campus	Y	NA
Bachelor of Arts majoring in English Literature	31	3	AC, M	N	N	Feb, July	70	On campus	Y	NA
Bachelor of Arts majoring in Environmental Management	32	3	AC, M	N	N	Feb, July	70	On campus	Y	NA
Bachelor of Arts majoring in French Studies	32	3	AC, M	N	N	Feb	70	On campus	Y	NA
Bachelor of Arts majoring in Gender and Sexuality Studies	32	3	AC, M	N	N	Feb, July	70	On campus	Y	NA
Bachelor of Arts majoring in Geography	32	3	AC, M	N	N	Feb, July	70	On campus	Y	NA
Bachelor of Arts majoring in German Studies	32	3	AC, M	N	N	Feb	70	On campus	Y	NA
Bachelor of Arts majoring in History	32	3	AC, M	N	N	Feb, July	70	On campus	Y	NA
Bachelor of Arts majoring in International Development	33	3	AC, M	N	N	Feb, July	70	On campus	Y	NA
Bachelor of Arts majoring in International Security	33	3	AC, M	N	N	Feb, July	70	On campus	Y	NA
Bachelor of Arts majoring in Italian Studies	33	3	AC, M	N	N	Feb	70	On campus	Y	NA
Bachelor of Arts majoring in Japanese Studies	33	3	AC, M	N	N	Feb	70	On campus	Y	NA
Bachelor of Arts majoring in Linguistics and Applied Linguistics	33	3	AC, M	N	N	Feb, July	70	On campus	Y	NA
Bachelor of Arts majoring in Philosophy	33	3	AC, M	N	N	Feb, July	70	On campus	Y	NA
Bachelor of Arts majoring in Politics	34	3	AC, M	N	N	Feb, July	70	On campus	Y	NA
Bachelor of Arts majoring in Population and Migration Studies	34	3	AC, M	N	N	Feb, July	70	On campus	Y	NA
Bachelor of Arts majoring in Screen Studies	34	3	AC, M	N	N	Feb, July	70	On campus	Y	NA
Bachelor of Arts majoring in Social Research and Policy Analysis	34	3	AC, M	N	N	Feb, July	70	On campus	Y	NA
Bachelor of Arts majoring in Sociology	34	3	AC, M	N	N	Feb, July	70	On campus	Y	NA
Bachelor of Arts majoring in Spanish Studies	34	3	AC, M	N	N	Feb	70	On campus	Y	NA

Campuses: Adelaide City = AC / Mawson Lakes = ML / Magill = M
 Mount Gambier = MG / Roseworthy = RW / Whyalla = W / Waite = WT

Study centres: PL = Port Lincoln / C = Ceduna

Pathways: L = Limited / L* = Limited as quotas apply

	Page reference	Program length (yrs)	Campus	Prerequisites	Assumed knowledge	Start date	Guaranteed Entry	Mode	Pathway programs	Graduate Certificate/ Diploma available
Bachelor of International Relations	36	3	AC	N N	N	Feb, July	70	On campus	Y	NA
Bachelor of International Relations majoring in Chinese Studies	36	3	AC, M	N N	N	Feb	70	On campus	Y	NA
Bachelor of International Relations majoring in Environmental Management	36	3	AC	N N	N	Feb, July	70	On campus	Y	NA
Bachelor of International Relations majoring in French Studies	37	3	AC, M	N N	N	Feb	70	On campus	Y	NA
Bachelor of International Relations majoring in German Studies	37	3	AC, M	N N	N	Feb	70	On campus	Y	NA
Bachelor of International Relations majoring in History	37	3	AC	N N	N	Feb, July	70	On campus	Y	NA
Bachelor of International Relations majoring in International Development	37	3	AC	N N	N	Feb, July	70	On campus	Y	NA
Bachelor of International Relations majoring in International Security	38	3	AC	N N	N	Feb, July	70	On campus	Y	NA
Bachelor of International Relations majoring in Italian Studies	38	3	AC, M	N N	N	Feb	70	On campus	Y	NA
Bachelor of International Relations majoring in Japanese Studies	38	3	AC, M	N N	N	Feb	70	On campus	Y	NA
Bachelor of International Relations majoring in Politics	38	3	AC	N N	N	Feb, July	70	On campus	Y	NA
Bachelor of International Relations majoring in Population and Migration Studies	39	3	AC	N N	N	Feb, July	70	On campus	Y	NA
Bachelor of International Relations majoring in Spanish Studies	39	3	AC, M	N N	N	Feb	70	On campus	Y	NA
Bachelor of Journalism	40	3	M, AC	N N	N	Feb, July	70	On campus	Y	NA
Bachelor of Journalism majoring in Creative Writing	40	3	M, AC	N N	N	Feb, July	70	On campus	Y	NA
Bachelor of Journalism majoring in Digital and Social Media Storytelling	40	3	M, AC	N N	N	Feb, July	70	On campus	Y	NA
Bachelor of Journalism majoring in Immersive Media	40	3	M, AC	N N	N	Feb, July	70	On campus	Y	NA
Bachelor of Journalism majoring in Politics	41	3	M, AC	N N	N	Feb, July	70	On campus	Y	NA
Bachelor of Journalism majoring in Strategic Communication	41	3	M, AC	N N	N	Feb, July	70	On campus	Y	NA
Bachelor of Media and Communication	42	3	AC, M	N N	N	Feb, July	70	On campus	Y	NA
Bachelor of Media and Communication majoring in Digital and Social Media Storytelling	42	3	AC, M	N N	N	Feb, July	70	On campus	Y	NA
Bachelor of Media and Communication majoring in Digital Media and Web Design	42	3	AC, M	N N	N	Feb, July	70	On campus	Y	NA
Bachelor of Media and Communication majoring in Games Design and Production	42	3	AC, M	N N	N	Feb, July	70	On campus	Y	NA
Bachelor of Media and Communication majoring in Immersive Media	43	3	AC, M	N N	N	Feb, July	70	On campus	Y	NA
Bachelor of Media and Communication majoring in Media Cultures	43	3	AC, M	N N	N	Feb, July	70	On campus	Y	NA
Bachelor of Media and Communication majoring in Screen Production	43	3	AC, M	N N	N	Feb, July	70	On campus	Y	NA
Bachelor of Media and Communication majoring in Screen Studies	43	3	AC, M	N N	N	Feb, July	70	On campus	Y	NA
Bachelor of Media and Communication majoring in Strategic Communication	43	3	AC, M	N N	N	Feb, July	70	On campus	Y	NA
Bachelor of Social Science majoring in Ageing and Disability	44	3	M OR MG OR W	N N	N	Feb, July	70	On campus	Y	NA
Bachelor of Social Science majoring in Human Services	44	3	M OR MG OR W	N N	N	Feb, July	70	On campus	Y	NA
Bachelor of Social Work	45	4	AC, M OR W	N N	N	Feb, July	70	On campus	Y	NA
Bachelor of Social Work (Honours)	45	4	AC, M	N N	N	Feb, July	70	On campus	Y	NA
Bachelor of Teaching (Early Childhood Education)	46	3	M, ML OR MG OR W	N N	N	Feb, July	80	On campus	Y	NA
Bachelor of Teaching (Primary) (Honours)	46	4	M, ML OR MG OR W	N N	N	Feb, July	80	On campus	Y	NA
Bachelor of Teaching (Secondary) (Honours)	47	4	AC, ML OR MG OR W	N N	N	Feb, July	80	On campus	Y	NA
DOUBLE DEGREES AND PACKAGED DEGREES										
Bachelor of Arts, Master of Teaching (Secondary)	-	4	AC, M	N N	N	Feb, July	NA	On campus	Y	NA
Bachelor of Commerce, Master of Teaching (Secondary)	-	4	AC / AC, ML, MG, W	N N	N	Feb, July	NA	On campus	Y	NA
Bachelor of Creative Arts, Master of Teaching (Secondary)	-	4	AC, M / AC, ML	N N	N	Feb, July	NA	On campus	Y	NA
Bachelor of Human Movement, Master of Teaching (Secondary)	-	4	AC, M	N N	N	Feb, July	NA	On campus	Y	NA
Bachelor of Mathematics, Master of Teaching (Secondary)	-	4	AC, M	N N	N	Feb, July	NA	On campus	Y	NA
Bachelor of Music, Master of Teaching (Secondary)	-	4	AC, M	N N	N	Feb, July	NA	On campus	Y	NA
Bachelor of Science, Master of Teaching (Secondary)	-	4	AC, M	N N	N	Feb, July	NA	On campus	Y	NA
100% ONLINE DEGREES										
Bachelor of Communication	35	3	Online	N N	N	1,2,3,4	NA	100% online	Y	N
Bachelor of Digital Media	35	3	Online	N N	N	1,2,3,4	NA	100% online	Y	N
Bachelor of Journalism	39	3	Online	N N	N	1,2,3,4	NA	100% online	Y	N
Bachelor of Marketing and Communication	41	3	Online	N N	N	1,2,3,4	NA	100% online	Y	N
POSTGRADUATE DEGREES										
Master of Aboriginal Studies	-	2	AC	N N	N	Feb, July	NA	On campus	Y	GC, GD
Master of Curatorial and Museum Studies	-	2	AC	N N	N	Feb, July	NA	On campus	Y	GC, GD
Master of Education	58	2	AC, M, ML	N N	N	Feb, July	NA	On campus	Y	GC
Master of Social Work	59	2	AC, M	N N	N	Feb	NA	On campus	Y	N
Master of Strategic Communication	59	2	AC	N N	N	Feb, July	NA	On campus	Y	N
Master of Teaching (Early Childhood Education)	58	2	AC, M, ML, MG, W	N Y	N	Feb, July	NA	On campus	Y	N

Campuses: Adelaide City = AC / Mawson Lakes = ML / Magill = M
 Mount Gambier = MG / Roseworthy = RW / Whyalla = W / Waite = WT
Study centres: PL = Port Lincoln / C = Ceduna
Pathways: L = Limited / L* = Limited as quotas apply

	Page reference	Program length (yrs)	Campus	Prerequisites	Assumed knowledge	Start date	Guaranteed Entry	Mode	Pathway programs	Graduate Certificate/ Diploma available
Master of Teaching (Primary)	-	2	AC, M, ML or MG or W	N	Y	Feb, July	NA	On campus	Y	N
Master of Teaching (Secondary)	-	2	AC, ML or MG or W	N	Y	Feb, July	NA	On campus	Y	N
HEALTH										
Bachelor of Biomedical and Health Sciences	26	3	AC	N	N	Feb, July	80	On campus	Y	NA
Bachelor of Biomedical and Health Sciences majoring in Biochemistry	27	3	AC	N	N	Feb, July	80	On campus	Y	NA
Bachelor of Biomedical and Health Sciences majoring in Clinical Trials	27	3	AC	N	N	Feb, July	80	On campus	Y	NA
Bachelor of Biomedical and Health Sciences majoring in Genetics	27	3	AC	N	N	Feb, July	80	On campus	Y	NA
Bachelor of Biomedical and Health Sciences majoring in Medical Science	27	3	AC	N	N	Feb, July	80	On campus	Y	NA
Bachelor of Biomedical and Health Sciences majoring in Microbiology and Immunology	28	3	AC	N	N	Feb, July	80	On campus	Y	NA
Bachelor of Biomedical and Health Sciences majoring in Neuroscience	28	3	AC	N	N	Feb, July	80	On campus	Y	NA
Bachelor of Biomedical and Health Sciences majoring in Public Health	28	3	AC	N	N	Feb, July	80	On campus	Y	NA
Bachelor of Biomedical and Health Sciences majoring in Reproductive and Childhood Health	28	3	AC	N	N	Feb, July	80	On campus	Y	NA
Bachelor of Clinical Exercise Physiology (Honours)	29	4	AC	N	N	Feb	90	On campus	Y	NA
Bachelor of Dental Surgery	30	5	AC	Y	Y	Feb	NA	On campus	L	NA
Bachelor of Exercise and Sport Science	30	3	AC	N	N	Feb, July	80	On campus	Y	NA
Bachelor of Human Movement majoring in Human Nutrition	33	3	AC	N	N	Feb, July	70	On campus	Y	NA
Bachelor of Human Movement majoring in Secondary Health and Physical Education	33	3	AC	N	N	Feb, July	70	On campus	Y	NA
Bachelor of Human Movement majoring in Sport Coaching	34	3	AC	N	N	Feb, July	70	On campus	Y	NA
Bachelor of Human Nutrition	34	3	AC, WT	N	N	Feb, July	NA	On campus	Y	NA
Bachelor of Laboratory Medicine (Honours)	35	4	AC	Y	N	Feb, July	80	On campus	Y	NA
Bachelor of Medical Radiation Science (Honours) majoring in Medical Imaging	35	4	AC	N	N	Feb	NA	On campus	L*	NA
Bachelor of Medical Radiation Science (Honours) majoring in Nuclear Medicine	36	4	AC	N	N	Feb	NA	On campus	L*	NA
Bachelor of Medical Radiation Science (Honours) majoring in Radiation Therapy	36	4	AC	N	N	Feb	NA	On campus	L*	NA
Bachelor of Medical Studies, Doctor of Medicine	37	6	AC	Y	Y	Feb	NA	On campus	L	NA
Bachelor of Midwifery	38	3	AC or MG or W	N	N	Feb	90	On campus	L	NA
Bachelor of Nursing	38	3	AC or MG or W	N	N	Feb	80	On campus	L*	NA
Bachelor of Occupational Therapy (Honours)	39	4	AC or W	N	N	Feb	NA	On campus	L*	NA
Bachelor of Oral Health	39	3	AC	Y	Y	Feb	NA	On campus	L	NA
Bachelor of Pharmaceutical Science	40	3	AC	Y	N	Feb, July	80	On campus	Y	NA
Bachelor of Pharmacy (Honours)	40	4	AC	Y	N	Feb, July	90	On campus	Y	NA
Bachelor of Physiotherapy (Honours)	41	4	AC or W	N	Y	Feb	NA	On campus	L*	NA
Bachelor of Podiatry (Honours)	41	4	AC	N	Y	Feb	90	On campus	L*	NA
Bachelor of Psychology	43	3	AC, M	N	N	Feb, July	70	On campus	Y	NA
Bachelor of Psychology majoring in Cognitive Neuroscience	43	3	AC, M	N	N	Feb, July	70	On campus	Y	NA
Bachelor of Psychology majoring in Counselling and Interpersonal Skills	43	3	AC, M	N	N	Feb, July	70	On campus	Y	NA
Bachelor of Psychology (Honours)	44	4	AC, M	N	N	Feb, July	NA	On campus	Y	NA
Bachelor of Psychology (Honours) majoring in Cognitive Neuroscience	44	4	AC, M	N	N	Feb, July	NA	On campus	Y	NA
Bachelor of Psychology (Honours) majoring in Counselling and Interpersonal Skills	44	4	AC, M	N	N	Feb, July	NA	On campus	Y	NA
Bachelor of Public Health	45	3	AC	N	N	Feb, July	70	On campus	Y	NA
Bachelor of Speech Pathology (Honours)	46	4	AC	N	N	Feb	NA	On campus	L*	NA
DOUBLE DEGREES AND PACKAGED DEGREES										
Bachelor of Human Movement, Master of Teaching (Secondary)	-	4.5	AC, M	N	N	Feb, July	NA	On campus	Y	NA
Bachelor of Pharmacy, Master of Pharmacy	-	5	AC	N	N	Feb, July	NA	On campus	Y	NA
100% ONLINE DEGREES										
Diploma in Health	26	1	Online	N	N	1,2,3,4	NA	100% online	Y	N
Bachelor of Community Health	29	3	Online	N	N	1,2,3,4	NA	100% online	Y	N
Bachelor of Health Science	31	3	Online	N	N	1,2,3,4	NA	100% online	Y	N
Bachelor of Health Science (Healthy Ageing)	31	3	Online	N	N	1,2,3,4	NA	100% online	Y	N
Bachelor of Health Science (Nutrition and Exercise)	32	3	Online	N	N	1,2,3,4	NA	100% online	Y	N
Bachelor of Health Service Management	32	3	Online	N	N	1,2,3,4,5,6	NA	100% online	Y	N
Bachelor of Psychological Sciences and Sociology	42	3	Online	N	N	1,2,3,4	NA	100% online	Y	N
Bachelor of Psychology	42	3	Online	N	N	1,2,3,4	NA	100% online	Y	N
Bachelor of Public Health	45	3	Online	N	N	1,2,3,4	NA	100% online	Y	N
Graduate Certificate in Childhood Trauma	-	0.5	Online	N	N	1, 3	NA	100% online	Y	N
Graduate Certificate in International Addiction Studies	-	0.5	Online	N	N	1,2,3,4,5,6	NA	100% online	Y	Y

Campuses: Adelaide City = AC / Mawson Lakes = ML / Magill = M
 Mount Gambier = MG / Roseworthy = RW / Whyalla = W / Waite = WT

Study centres: PL = Port Lincoln / C = Ceduna

Pathways: L = Limited / L* = Limited as quotas apply

	Page reference	Program length (yrs)	Campus	Prerequisites	Assumed knowledge	Start date	Guaranteed Entry	Mode	Pathway programs	Graduate Certificate/ Diploma available
Graduate Certificate in Nursing Science (Infection Control Nursing)	-	0.5	Online	N	N	1,2,3,4,5,6	NA	100% online	Y	N
Graduate Diploma in International Addiction Studies	-	1	Online	N	N	1,2,3,4,5,6	NA	100% online	Y	Y
Graduate Diploma in Psychology (Advanced)	-	1	Online	N	N	1,2,3,4,5,6	NA	100% online	Y	N
Graduate Diploma in Psychology	-	1.25	Online	N	N	1,2,3,4,5,6	NA	100% online	Y	N
Master of Science in Addiction Studies	-	1.5	Online	N	N	1,2,3,4,5,6	NA	100% online	Y	N
POSTGRADUATE DEGREES										
Doctor of Clinical Dentistry	-	3	AC	N	N	Feb	NA	On campus	Y	N
Graduate Certificate in Alcohol and Drug Studies	-	0.5	AC	N	N	Feb	NA	On campus	Y	N
Graduate Certificate in Breast Imaging	-	0.5	AC	N	N	Feb, July	NA	On campus	Y	N
Graduate Certificate in Oral Health Science	-	0.5	AC	N	N	Jul	NA	On campus	Y	N
Graduate Certificate in Pharmacy Practice	-	0.5	AC	N	N	Jul	NA	On campus	Y	N
Graduate Diploma in Forensic Odontology	-	1	AC	N	N	Feb, July	NA	On campus	Y	N
Graduate Diploma in Maternal, Child and Family Health	-	1	AC	N	N	Feb, July	NA	On campus	Y	N
Master of Advanced Clinical Physiotherapy	-	1	AC	N	N	Jul	NA	On campus	Y	N
Master of Counselling and Psychotherapy	58	2	AC	N	N	Feb	NA	On campus	Y	GC, GD
Master of Medical Sonography	-	1.5	AC	N	N	Feb, July	NA	On campus	Y	GC, GD
Master of Midwifery	58	2	AC	N	N	Feb, July	NA	On campus	Y	N
Master of Midwifery (Graduate Entry)	-	2	AC	N	N	Jul	NA	On campus	Y	N
Master of Minimally Invasive Surgery	-	1	AC	N	N	Feb	NA	On campus	Y	N
Master of Nursing (Graduate Entry)	59	2	AC	N	N	Jul	NA	On campus	Y	N
Master of Nursing (Nurse Practitioner)	-	1.5	AC	N	N	Feb, July	NA	On campus	Y	N
Master of Nursing	-	2	AC	N	N	Feb, July	NA	On campus	Y	GC, GD
Master of Occupational Therapy	-	2	AC	Y	N	Feb	NA	On campus	Y	N
Master of Pharmacy	-	1	AC	N	N	Feb	NA	On campus	Y	N
Master of Physiotherapy	59	2	AC	Y	N	Feb	NA	On campus	Y	N
Master of Psychology (Clinical)	-	2	AC, M	N	N	Feb	NA	On campus	Y	N
Master of Psychology (Health)	-	2	AC, M	N	N	Feb	NA	On campus	Y	N
Master of Psychology (Organisational and Human Factors)	-	2	AC, M	N	N	Feb	NA	On campus	Y	N
Master of Public Health	-	2	AC	N	N	Feb, July	NA	On campus	Y	GC, GD
SCIENCE, TECHNOLOGY AND ENGINEERING										
Bachelor of Agricultural Sciences	30	3	WT, AC, RW	N	Y	Feb, July	70	On campus	Y	NA
Bachelor of Aviation majoring in Management	30	3	ML	N	N	Feb, July	70	On campus	Y	NA
Bachelor of Aviation majoring in Pilot	31	3	ML	N	N	Feb, July	70	On campus	Y	NA
Bachelor of Construction Management	32	3	AC	N	N	Feb, July	70	On campus	Y	NA
Bachelor of Construction Management (Honours)	33	4	AC	N	N	Feb, July	80	On campus	Y	NA
Bachelor of Engineering (Honours) (Flexible Entry)	39	4	AC, ML	N	N	Feb, July	80	On campus	Y	NA
Bachelor of Engineering (Chemical) (Honours)	34	4	AC, ML	Y	N	Feb, July	80	On campus	Y	NA
Bachelor of Engineering (Chemical) (Honours) majoring in Energy Resources Engineering	35	4	AC, ML	Y	N	Feb, July	80	On campus	Y	NA
Bachelor of Engineering (Civil) (Honours)	36	4	AC, ML	Y	N	Feb, July	80	On campus	Y	NA
Bachelor of Engineering (Civil) (Honours) majoring in Construction Engineering	36	4	AC, ML	Y	N	Feb, July	80	On campus	Y	NA
Bachelor of Engineering (Civil) (Honours) majoring in Energy Resources Engineering	36	4	AC, ML	Y	N	Feb, July	80	On campus	Y	NA
Bachelor of Engineering (Civil) (Honours) majoring in Mining Engineering	37	4	AC, ML	Y	N	Feb, July	80	On campus	Y	NA
Bachelor of Engineering (Civil) (Honours) majoring in Structural Engineering	37	4	AC, ML	Y	N	Feb, July	80	On campus	Y	NA
Bachelor of Engineering (Electrical and Electronic) (Honours)	38	4	AC, ML	Y	N	Feb, July	80	On campus	Y	NA
Bachelor of Engineering (Electrical and Electronic) (Honours) majoring in Mechatronics and Robotics	38	4	AC, ML	Y	N	Feb, July	80	On campus	Y	NA
Bachelor of Engineering (Environmental) (Honours)	39	4	AC, ML	Y	N	Feb, July	80	On campus	Y	NA
Bachelor of Engineering (Mechanical) (Honours)	40	4	AC, ML	Y	N	Feb, July	80	On campus	Y	NA
Bachelor of Engineering (Mechanical) (Honours) majoring in Aerospace Engineering	40	4	AC, ML	Y	N	Feb, July	80	On campus	Y	NA
Bachelor of Engineering (Mechanical) (Honours) majoring in Energy Resources Engineering	40	4	AC, ML	Y	N	Feb, July	80	On campus	Y	NA
Bachelor of Engineering (Mechanical) (Honours) majoring in Mechatronics and Robotics	41	4	AC, ML	Y	N	Feb, July	80	On campus	Y	NA
Bachelor of Engineering (Mechanical) (Honours) majoring in Mining Engineering	41	4	AC, ML	Y	N	Feb, July	80	On campus	Y	NA
Bachelor of Science	42	3	AC, WT, RW, ML	N	N	Feb, July	70	On campus	Y	NA
Bachelor of Science majoring in Analytical Chemistry	42	3	AC	N	N	Feb, July	70	On campus	Y	NA
Bachelor of Science majoring in Animal Behaviour	42	3	AC, RW	N	N	Feb, July	70	On campus	Y	NA
Bachelor of Science majoring in Animal Science	42	3	AC, RW	N	N	Feb, July	70	On campus	Y	NA

Campuses: Adelaide City = AC / Mawson Lakes = ML / Magill = M
 Mount Gambier = MG / Roseworthy = RW / Whyalla = W / Waite = WT

Study centres: PL = Port Lincoln / C = Ceduna

Pathways: L = Limited / L* = Limited as quotas apply

	Page reference	Program length (yrs)	Campus	Prerequisites	Assumed knowledge	Start date	Guaranteed Entry	Mode	Pathway programs	Graduate Certificate/ Diploma available
Bachelor of Science majoring in Biochemistry	43	3	AC	N	N	Feb, July	70	On campus	Y	NA
Bachelor of Science majoring in Biotechnology	43	3	AC	N	N	Feb, July	70	On campus	Y	NA
Bachelor of Science majoring in Chemistry	43	3	AC	N	N	Feb, July	70	On campus	Y	NA
Bachelor of Science majoring in Computational Physics	43	3	AC	N	N	Feb, July	70	On campus	Y	NA
Bachelor of Science majoring in Ecology	43	3	AC, WT	N	N	Feb, July	70	On campus	Y	NA
Bachelor of Science majoring in Environmental and Geospatial Science	44	3	AC, ML, WT	N	N	Feb, July	70	On campus	Y	NA
Bachelor of Science majoring in Environmental Science	43	3	AC, ML, WT	N	N	Feb, July	70	On campus	Y	NA
Bachelor of Science majoring in Evolutionary Biology	44	3	AC	N	N	Feb, July	70	On campus	Y	NA
Bachelor of Science majoring in Evolutionary Biology and Palaeontology	44	3	AC	N	N	Feb, July	70	On campus	Y	NA
Bachelor of Science majoring in Experimental Physics	44	3	AC	N	N	Feb, July	70	On campus	Y	NA
Bachelor of Science majoring in Food Science and Technology	44	3	WT, AC	N	N	Feb, July	70	On campus	Y	NA
Bachelor of Science majoring in Genetics	44	3	AC	N	N	Feb, July	70	On campus	Y	NA
Bachelor of Science majoring in Geology	45	3	AC	N	N	Feb, July	70	On campus	Y	NA
Bachelor of Science majoring in Geology and Earth Resources	45	3	AC	N	N	Feb, July	70	On campus	Y	NA
Bachelor of Science majoring in Geology and Palaeontology	45	3	AC	N	N	Feb, July	70	On campus	Y	NA
Bachelor of Science majoring in Geophysics	45	3	AC	N	N	Feb, July	70	On campus	Y	NA
Bachelor of Science majoring in Marine and Wildlife Conservation	45	3	AC	N	N	Feb, July	70	On campus	Y	NA
Bachelor of Science majoring in Medicinal and Biological Chemistry	45	3	AC	N	N	Feb, July	70	On campus	Y	NA
Bachelor of Science majoring in Microbiology and Immunology	46	3	AC	N	N	Feb, July	70	On campus	Y	NA
Bachelor of Science majoring in Nuclear and Radiation Physics	46	3	AC	N	N	Feb, July	70	On campus	Y	NA
Bachelor of Science majoring in Nuclear Chemistry	46	3	AC	N	N	Feb, July	70	On campus	Y	NA
Bachelor of Science majoring in Physics and Geophysics	46	3	AC	N	N	Feb, July	70	On campus	Y	NA
Bachelor of Science majoring in Plant Biology	46	3	WT, AC	N	N	Feb, July	70	On campus	Y	NA
Bachelor of Science majoring in Pure and Applied Chemistry	47	3	AC	N	N	Feb, July	70	On campus	Y	NA
Bachelor of Science majoring in Soil Science	47	3	WT, AC	N	N	Feb, July	70	On campus	Y	NA
Bachelor of Science majoring in Space Science and Astrophysics	47	3	AC	N	N	Feb, July	70	On campus	Y	NA
Bachelor of Science majoring in Theoretical Physics	47	3	AC	N	N	Feb, July	70	On campus	Y	NA
Bachelor of Science (Honours)	48	4	AC, WT, RW, ML	N	N	Feb, July	80	On campus	Y	NA
Bachelor of Science (Veterinary Bioscience), Doctor of Veterinary Medicine	48	6	AC, RW	Y	Y	Feb	NA	On campus	L*	NA
Bachelor of Sustainability and Climate Change	49	3	AC, M	N	N	Feb, July	80	On campus	Y	NA
Bachelor of Sustainability and Climate Change majoring in Aboriginal Studies	49	3	AC, M	N	N	Feb, July	80	On campus	Y	NA
Bachelor of Sustainability and Climate Change majoring in Anthropology	49	3	AC, M	N	N	Feb, July	80	On campus	Y	NA
Bachelor of Sustainability and Climate Change majoring in Environmental Management	49	3	AC, M	N	N	Feb, July	80	On campus	Y	NA
Bachelor of Sustainability and Climate Change majoring in Geography	50	3	AC, M	N	N	Feb, July	80	On campus	Y	NA
Bachelor of Sustainability and Climate Change majoring in International Development	50	3	AC, M	N	N	Feb, July	80	On campus	Y	NA
Bachelor of Sustainability and Climate Change majoring in International Security	50	3	AC, M	N	N	Feb, July	80	On campus	Y	NA
Bachelor of Sustainability and Climate Change majoring in Politics	50	3	AC, M	N	N	Feb, July	80	On campus	Y	NA
Bachelor of Sustainability and Climate Change majoring in Population and Migration Studies	50	3	AC, M	N	N	Feb, July	80	On campus	Y	NA
Bachelor of Sustainability and Climate Change majoring in Sociology	50	3	AC, M	N	N	Feb, July	80	On campus	Y	NA
Bachelor of Veterinary Technology	51	3	RW	N	Y	Feb	80	On campus	Y	NA
Bachelor of Viticulture and Oenology	51	4	AC, WT	N	Y	Feb, July	70	On campus	Y	NA
DOUBLE DEGREES AND PACKAGED DEGREES										
Bachelor of Science, Master of Teaching (Secondary)	-	-	AC, M	N	N	Feb	NA	On campus	Y	NA
100% ONLINE DEGREES										
Associate Degree in Engineering	34	2	Online	Y	N	1,2,3,4	NA	100% online	Y	Y
Bachelor of Construction Management	32	3	Online	N	N	1,2,3,4	NA	100% online	Y	N
Bachelor of Construction Management (Honours)	33	4	Online	N	N	1,2,3,4	NA	100% online	Y	N
POSTGRADUATE DEGREES										
Graduate Diploma in Aviation	-	1	ML	N	N	Feb	NA	On campus	Y	N
Master of Construction Management	-	2	AC	N	N	Feb, July	NA	On campus	Y	GD
Master of Engineering (various specialisations)	62	2	AC, ML	N	N	Feb, July	NA	On campus	Y	GC, GD
Master of Professional Engineering (various specialisations)	-	2	AC, ML	N	N	Feb, July	NA	On campus	Y	N
Master of Science (various specialisations)	62	2	varies	N	N	Feb, July	NA	On campus	Y	N
Master of Technology, Innovation and Entrepreneurship	63	2	AC	N	N	Feb, July	NA	On campus	Y	GC, GD
Master of Viticulture and Oenology	63	2	WT	N	N	Feb, July	NA	On campus	Y	N

Further study

Completed an undergraduate degree, and looking to hone your expertise?

Whatever your career stage or goal, we offer a range of postgraduate qualifications designed to help you advance your skills. We've included a snapshot of the degrees available.

Explore the full suite at: adelaideuni.edu.au/study

Master of Counselling and Psychotherapy

Duration: 2 years full-time
Campus: Adelaide City

Strengthen mental health as an accredited clinician.

Counsellors work holistically to facilitate change in clients' emotional, mental, and relational difficulties. It's a rewarding career choice for anyone who wants to pursue personal growth and collaboratively transform the lives of others. This is a career that requires empathy, patience and exceptional interpersonal skills. If you possess these qualities and are motivated to support others, our Master of Counselling and Psychotherapy is for you.

Help people navigate mental health challenges like anxiety, trauma or depression. Gain competence in trauma recovery, empowering survivors of abuse and interpersonal violence. Develop the skills to not only listen but bring about transformation in line with client goals.

Career outcomes

As a Master of Counselling and Psychotherapy graduate, you'll be ready for a variety of fulfilling roles in a range of areas. You might specialise in working with young people in school settings, helping them to cope with academic pressures or bullying. Perhaps you'll become a relationship counsellor, helping couples to overcome challenges in their relationship. Maybe you will counsel trauma survivors or work directly with people experiencing grief and loss.

Master of Midwifery

Duration: 2 years full-time
Campus: Adelaide City

Go beyond traditional midwifery.

Make a difference to the lives of women and infants through higher level practice, leadership education and research. Through a supportive scaffolded approach, advance your practical midwifery knowledge and develop leadership and research capabilities.

Level up your professional knowledge to provide first-class care to families or lead the way through groundbreaking research.

Study your way. Choose electives that suit your interests. Enjoy the flexibility of full-time or part-time study to suit your lifestyle.

Career outcomes

The Master of Midwifery will prepare you to take the next step in your career and position you to move into advanced clinical roles, senior leadership, policy development, clinical education, research, or academia. Equipped with sought-after specialised knowledge, you'll be well placed to consider roles such as:

- Clinical educator
- Clinical midwifery specialist
- International aid worker

Master of Nursing (Graduate Entry)

Duration: 2 years full-time
Campus: Adelaide City

Join the registered nurse workforce in just two years.

A career as a registered nurse (RN) is deeply rewarding. Registered nurses work as the backbone of Australia's healthcare system, working in and with different departments, locations and people. Each day is different and offers both challenges and opportunities to provide care.

Studying nursing via graduate entry will prepare you to become a registered nurse in an accelerated two-year degree. Learn professional skills and nursing knowledge in disciplines crossing biosciences, social sciences, law and communication. Develop your confidence in professional practice by participating in immersive simulations. Engage in over 800 hours of hands-on learning and placements in clinical environments.

Career outcomes

Registered nurses work all over Australia. They work in our hospitals, community clinics and in rural areas, providing patient-centred care for adults and children alike.

Your career options upon graduating are diverse. You could provide patient care in a variety of settings, including:

- Public or private hospitals
- Community health organisations
- International aid agencies
- Management.

Master of Physiotherapy

Duration: 2 years full-time
Campus: Adelaide City

Prerequisites: Applicants are required to provide evidence of satisfactory completion of prerequisite courses in the last 10 years in the following content areas:

- **Statistics and Research Methods; AND**
- **Human Anatomy; AND**
- **Human Physiology**

Health and mobility are fundamental to our quality of life. When compromised, there are huge consequences for wellbeing.

At Adelaide University, you'll gain the tools to excel as a physiotherapist with patient-centred care at the heart of your practice.

Empower individuals to reclaim their lives through holistic care of the body and mind. Put your problem-solving skills to the test. Support recovery from injuries, operations and chronic pain. Secure a well-paying job in a people-oriented field. Enhance your personal wellbeing and make a meaningful difference.

Career outcomes

You'll graduate with the skills and knowledge you need to help people of all ages reach their full potential. Physiotherapists can work across the globe, both as first contact professionals and in multidisciplinary healthcare teams. You might be head physio for the Matildas or the Socceroos. You could open your own physiotherapy clinic. Perhaps you'll support hospital patients recovering from surgeries, injuries or strokes.

Study 100% online

We're one of Australia's largest online universities.

Developed in consultation with industry, our 100% online degrees have been specifically designed for online learning. You'll have the freedom to study where and when it suits you with on-demand access to interactive and media-rich study resources.

From application to graduation, your online study journey will be fully supported. Our student support team is available over extended hours, ready to help you enrol, discuss your study goals, assist you in tailoring a personalised study plan or refer you to specialised support and career services.

You'll also have access to your dedicated team of experienced online teaching staff who will support your learning when you need it, even out of hours. Plus, our IT help desk is available 24 hours a day, seven days a week, so you can get help when you need it.

Studying online doesn't mean studying alone. You'll have opportunities to virtually connect with your peers and network with and learn from industry leaders and expert academics during your degree.

Unlock your potential and change your direction. Study a 100% online degree with Adelaide University.

adelaideuni.edu.au/study/online



Future-making research



Our researchers advance future-defining ideas and solutions.

They dream big, think deeply and challenge assumptions so we can make the world a better place. We forge dynamic partnerships, always collaborating to ensure our impact is transformative and enduring.

Operating on a large scale, we have more capacity for breakthroughs and a greater appetite for change.

Our research will transform South Australia's economy and accelerate its leadership on a global scale.

Our five signature research themes are founded on excellence and focused on impact:

- Creative and Cultural
- Defence and National Security
- Food, Agriculture and Wine
- Personal and Societal Health
- Sustainable Green Transition

Find out more about our research:

adelaideuni.edu.au/research



Applying to Adelaide University

How to apply

Applications to Adelaide University undergraduate degrees are made online via SATAC:

satac.edu.au

Applications open in early August. Apply before 30 September to avoid paying the SATAC late fee. You can add and swap preferences for most programs until the Change of Preference deadline in early January 2026, except for a handful of programs (including Bachelor of Medical Studies/Doctor of Medicine, Bachelor of Science (Veterinary Bioscience), Bachelor of Oral Health, and Bachelor of Dental Surgery) which close to new preferences on 30 September.

Entry pathways

As part of its founding charter, Adelaide University has committed to delivering higher education for everyone, no matter their educational background. We offer pathways to study that support a diverse range of learning needs. These options include Year 12 entry, International Baccalaureate (IB), Grades-based entry, STAT, TAFE, and our preparatory programs, Foundation Studies and the Aboriginal and Torres Strait Islander Pathway.

To find out more about the available pathways, see pages 16 and 18.

Adjustment factors

SATAC centrally administers two South Australian universities adjustment factors schemes. The two schemes are the Universities Equity Scheme and the Universities Language, Literacy and Mathematics Scheme.

satac.edu.au/adjustment-factors

Degree intake

Many undergraduate degrees will allow students to commence study in February or July. Please refer to individual degrees to check whether midyear entry is available. For students looking to study 100% online we have intakes throughout the year.

Deferring your studies

Most undergraduate degrees can be deferred for up to two years. Please refer to specific degrees for exceptions.

English language requirements for international students

All international students undertaking an Australian Year 12 program are required to achieve a Pass grade or above in one of the approved English as a Second Language or English language subjects. If an applicant attempts but does not pass the English language subject, then alternative options, such as an acceptable English language proficiency test result, may be arranged.

Successful completion of the International Baccalaureate (IB) diploma meets the English language requirements of Adelaide University.

Unique Student Identifier

A Unique Student Identifier (USI) is your individual education number for life. It creates an online record of your education and training undertaken in Australia. If you are at university you need a USI. Without one, you cannot receive Commonwealth financial assistance, or your qualification or statement of attainment.

For more details, visit:

usi.gov.au/students/get-a-usi

More information

Find answers to your questions using our online Knowledge Base, or our helpful staff can respond.

adelaideuni.edu.au/about/faqs

HECS Higher Education Loan

The Higher Education Support Act 2003 has undergone some change, which will affect students studying in a Commonwealth supported place from 1 January, 2021. The changes include: Adjusting the maximum Student Contribution amounts for different areas of study, for students commencing a new program in 2021, Grandfathering Student Contribution amounts for continuing students, re-introducing the 10% HECS-HELP discount for HECS-HELP eligible students who make an up-front payment of \$500 or more towards their Student Contribution amount.

All Commonwealth supported students, and students accessing any of the HELP loans, must provide their valid Unique Student Identifier (USI).

For more information, please visit:

usi.gov.au

Student services and amenities fee

Students are charged an annual student services and amenities fee (SSAF) to assist with the funding of student services and amenities at the University. Eligible students may defer this fee to an SA-HELP loan.

Additional costs

Students may be required to pay for specialist equipment and reading materials, or may incur other incidental costs throughout their studies. Students are advised not to purchase any equipment until they receive their faculty/school handbook, available during Orientation.

2025 fees and costs

Fees for Commonwealth Supported Places are calculated at the course (unit) level, not the program (degree) level, according to the area of study that each course falls within. As a guide the 2025 Student contribution bands are shown below, noting that these are likely to change for 2026.

adelaideuni.edu.au/study/how-to-apply/entry-requirements/commonwealth-supported-students

Areas of study	Student contribution per 1 EFTSL (24 units)	Student contribution per 0.125 EFTSL (3 units)
Band 1: Agriculture, English, Languages, Mathematics, Nursing, Postgraduate Clinical Psychology, Teaching	\$578	\$4,627
Band 2: Allied Health, Architecture, Engineering, Environmental Studies, IT, Performing Arts, Professional Pathway Psychology*, Science	\$1,164	\$9,314
Band 3: Dentistry, Medicine, Veterinary Science	\$1,655	\$13,241
Band 4: Accounting, Administration, Behavioural Science (not Professional Pathway Psychology*), Economics, Humanities, Law, Media, Social Studies	\$2,124	\$16,992

Further enquiries

Adelaide University
SA 5005 Australia

adelaideuni.edu.au
facebook.com/adelaideuni
linkedin.com/school/adelaideuni
youtube.com/@AdelaideUniAustralia
instagram.com/adelaideuni
tiktok.com/@adelaideuni

The content in this publication is for general information only and Adelaide University makes no representation about its accuracy, completeness or suitability for any purpose. It is subject to change, and you can find updated information on our website at **adelaideuni.edu.au**

Printed February 2025