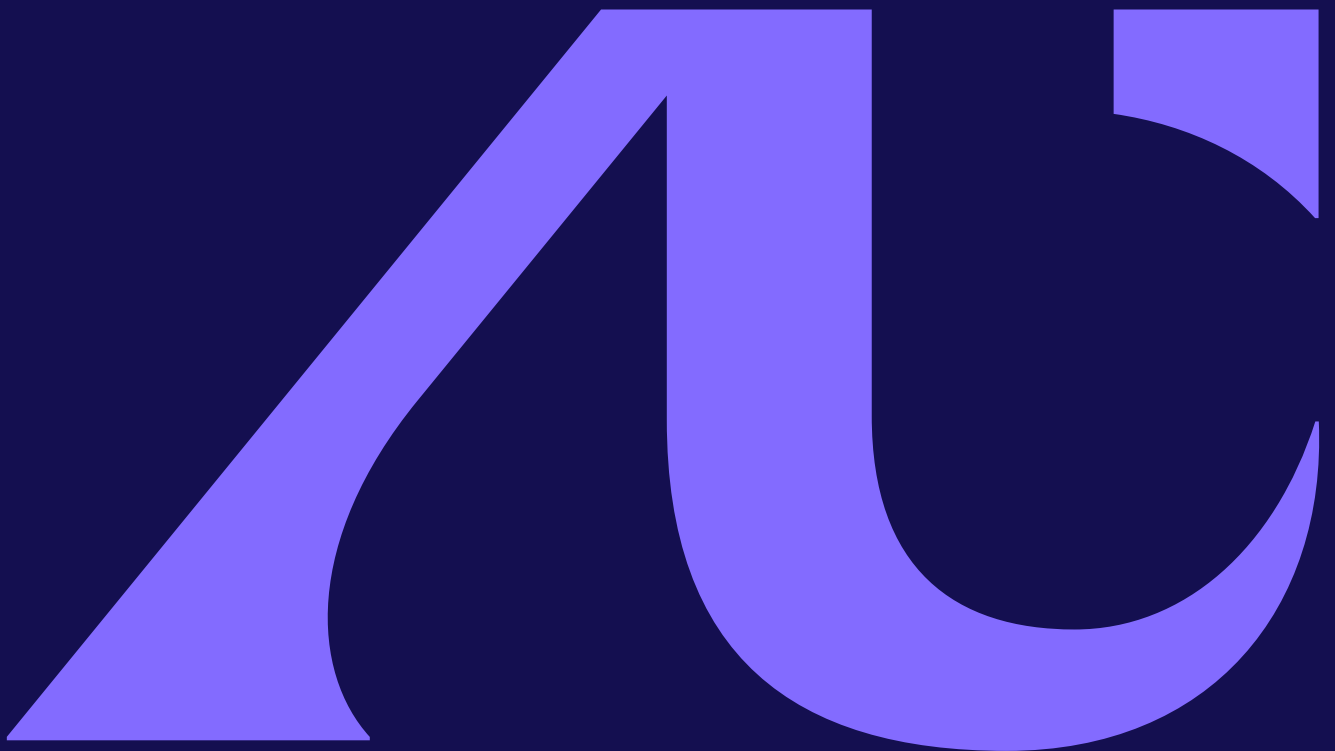


**A new
university
for the
future.**



A new major Australian University in a generation, transforming education, research and innovation with impact that transcends borders around the world.

Contemporary and comprehensive, Adelaide University is breaking ground.

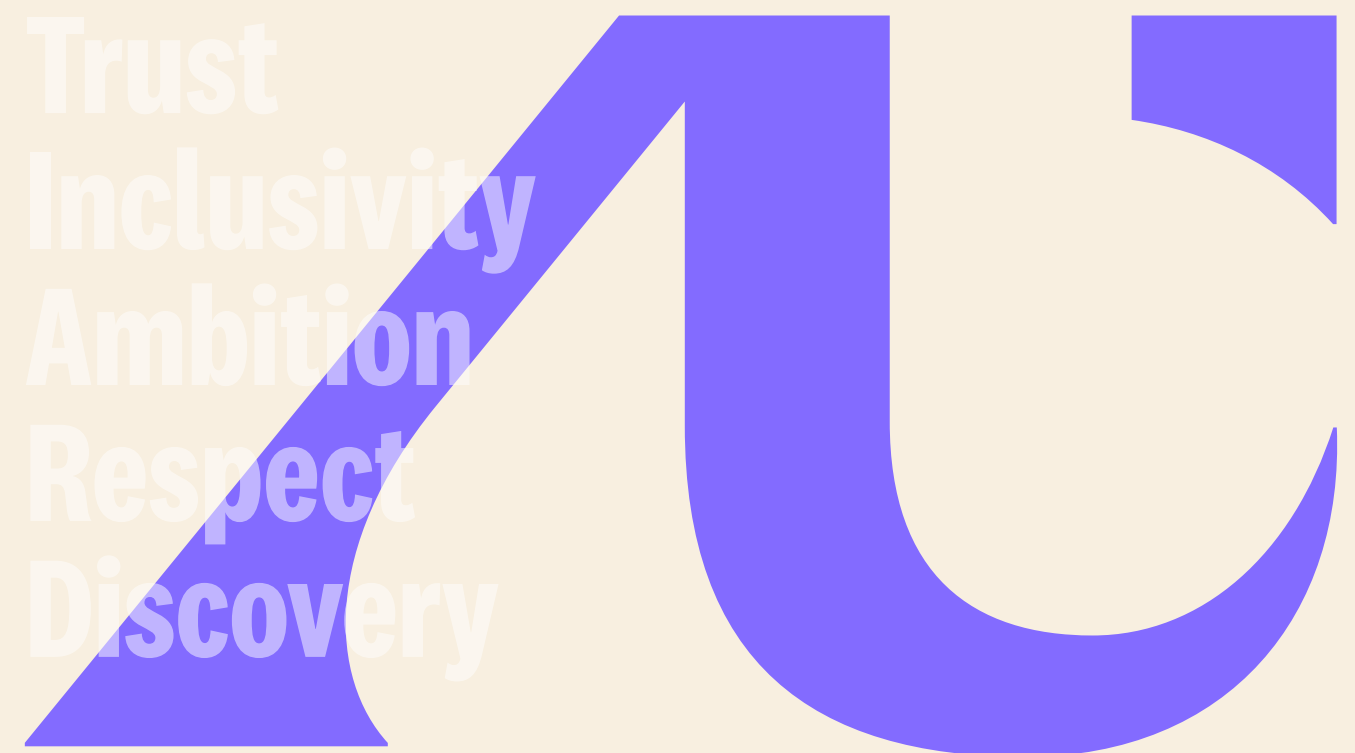
The Adelaide University logo is based on a monogram of our initials, tilted forward to convey momentum and future focus with an angle that echoes the Adelaide Festival Centre – the beating cultural heart of our home city. The monogram balances stability with agility, drawing from the rich heritage of both founding universities. Its curvature and shape reflect the broader state of South Australia with harmony and openness.

adelaideuni.edu.au

Contents

About Adelaide University	5
Transformational teaching and learning	8
Exceptional student experience	12
Reimagined research	14
Powerful partnerships	16
Campus footprint	18

We respectfully acknowledge the Kurna, Boandik, and Barngarla First Nations Peoples and their Elders past and present, who are the Traditional Owners of the lands that are home to our campuses across South Australia.



Our mission

Australia's new for-purpose university is a leading contemporary comprehensive university of global standing. We are dedicated to ensuring the prosperity, wellbeing and cohesion of society by addressing educational inequality through our actions and through the success and impact of our students, staff and alumni. Partnered with the communities we serve, we conduct outstanding future-making research of scale and focus.



About Adelaide University

Heightened ambition

We are a university for the future – focused on making a transformative impact in our world – and yours. We are built on the legacies of the University of South Australia and the University of Adelaide with an ambition that combines our strengths to unlock a new for-purpose university that will create brighter futures for contemporary learners and global citizens, along with future-making research of scale and focus that shapes the relevant shifts our society needs.

Education and research can empower whole-of-communities, accelerating the path to betterment through cohesion and prosperity. Adelaide University will rise to the occasion by delivering nation-leading curriculum and exceptional student experience, pursuing greater educational equality, expanding research partnerships and outcomes, aligning with industry, and generating significant resource.



We are creating Australia's new major university with a strategic direction that will optimise and pursue our ambitions on the global stage as a member of the prestigious Group of Eight (Go8). Furthermore, Adelaide University has obtained the necessary Commonwealth approval from the Tertiary Education Quality and Standards Agency for registration as an Australian University higher education provider, and for the maximum possible period of seven years.



“We fervently believe in the power of education and research to create vibrant communities and to address the multigenerational challenges before us. Adelaide University will drive a transformative agenda as a global powerhouse and world reference point for the delivery of excellence and equity.”

Professor Peter Høj AC and Professor David G. Lloyd
co-Vice Chancellors, Adelaide University

Our foundations

From its inception in 1874, the University of Adelaide has been a steadfast social, cultural and academic leader. Established as South Australia's first university, the institution is connected to five Nobel Laureates, produced more than 100 Rhodes Scholars and 100 Fulbright Scholars, was the first to admit women to all degree courses on an equal basis to men (in 1881), has reimagined plant design and bioresource production for space, built Australia's first satellite in partnership with Defence, and is home to Australia's first music school.



“Adelaide University will be a pre-eminent, leading and contemporary university of global standing with a vision and mission that is dedicated to ensuring the wellbeing and cohesion of society – to become an enduring destination of strength, innovation and impact for generations to come.”

Pauline Carr
Chancellor, Adelaide University
Transition Council

Established in 1991, the University of South Australia has a modern legacy, and was formed through the amalgamation of antecedent institutions, pioneering schools and colleges that educated the State's first teachers, artists and town planners dating back to the 1800s. As Australia's University of Enterprise with a trailblazing spirit, it was the first Australian university to articulate graduate qualities in curriculum, the first to make a public commitment to the achievement of reconciliation with our First Nations' Peoples, the first university in the world to implement Innovation Jam™ technology to distil a crowdsourcing strategy spanning 56 countries; and Australia's first tertiary provider of aviation education.

The new Adelaide University will build upon these foundations as we advance together to create a new driving force that will propel the next generation of leaders towards their world of significant firsts.

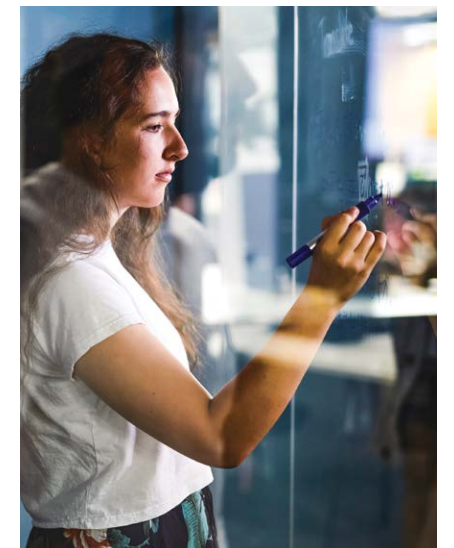
And we are already creating our list of firsts. Adelaide University will be the first tertiary institution in Australia to have provision for an Aboriginal name in its founding legislation, we are the only university to be selected in more than one of NASA's Artemis III lunar science missions with the primary aim of putting the first woman and the first person of colour on the moon, and we have been selected as the first operator of the new Australian Defence Technologies Academy.

Next generation focus

Through meaningful partnerships with end-users, anchored in educational and research excellence, Adelaide University will make a measurable impact through:

- addressing intergenerational disadvantage
- creative and cultural industries
- health and wellbeing
- sustainable futures
- future workforce and sovereign capability.

Our ambition is to be world leading and world referenced through our actions and through the success and impact of our students, staff, researchers, partners and alumni community.



Member of the Group of Eight

Invitation to join Australia's leading research-intensive universities.



Top 1 % of universities worldwide

Aims to be sustainably ranked in the top 1% of universities globally.



Top in Australia for student experience

Aims to be sustainably ranked as the best university nationally for student employment outcomes.



Top 5 nationally for student experience

Aims to be sustainably ranked in Australia's top 5 universities for student experience.



Adelaide University's activities will contribute an estimated \$4.7 billion a year to the Australian economy.

Transformational teaching and learning

Enabling educational achievement

Through comprehensive and contemporary curriculum, Adelaide University is designed for lifelong knowledge seekers. Our approach is shaped in partnership with industry, embedded with work-integrated learning, digitally underpinned, internationally informed and connected, reflective of our research, and geared to respond to skills shortages that are central to economic growth and the betterment of communities, globally.

Our overarching aspiration is to enable individuals and society to become the best they can be – towards a better Australia.

Our study areas

Our comprehensive suite of programs will produce career-ready employable graduates, from all walks of life, aligned to disciplines and jobs in future areas of demand, including:

- Accounting, Commerce and Economics
- Animal and Veterinary Science
- Architecture and Design
- Arts
- Aviation
- Business, Marketing and Management
- Communication and Media
- Engineering
- Health and Biomedical Sciences
- Information Technology
- Mathematics and Data Science
- Medicine and Dentistry
- Nutrition and Food Science
- Nursing
- Property, Construction and Real Estate
- Psychology and Social Work
- Science, Environment and Sustainability
- Teaching and Education
- Tourism, Sport and Events.

Pursuing educational equality

Education can transform lives and livelihoods. Adelaide University has a decadal ambition to widen access to education – to provide opportunities and prepare graduates from all walks of life and breaking the cycle of inequality. We will forever change the role that Australian universities play in providing equity and access to higher education through flexible entry, pathways, scholarships, and dedicated student support.



The Adelaide Attainment Model

Adelaide University is redefining the teaching and learning experience by developing Australia's most accessible, contemporary and future-focused curriculum. This is underpinned by the Adelaide Attainment Model with distinctive features that support student access, participation, and success as lifelong learners from preparation to high achievers.

Modular and stackable

Through modularised curriculum, Adelaide University will enhance the educational experience for students to increase learner flexibility, credit transfer, and study access and inclusivity. Stackable degree structures will enable multiple entry paths and nested qualifications to support scaffolded learning attainment and transitions. To recognise the holistic learning experience, Adelaide University students can also receive award and non-award digital badges to form a digital portfolio of their academic and extracurricular achievements across knowledge, skills, projects and innovation.

Flexible academic calendar

Academic delivery at Adelaide University has the contemporary learner at its core. Our transformation will see the delivery of 10-week modular courses that create greater flexibility and balance for students.



Digitally underpinned

Learning at Adelaide University will be digitally rich. This will be supported by a fit for purpose learning environment enabled with adaptable access to learning materials and resources, AI technologies, interactive analytics, and mobile responsiveness.

Integrated learning

Embedded work-integrated learning is a centrepiece of our academic delivery. Students will gain future-focused knowledge connected to the latest research concepts and combined with practical learner activities informed by industry insights, including internships, placements, community projects, volunteering and global study opportunities.

Graduate qualities

Lifelong learning is the unifying attribute of an Adelaide University graduate. This is defined by five graduate qualities that develop curious scholars and brave innovators as ethical leaders, strategic problem

solvers, trusted communicators, progressive thinkers and global citizens. At Adelaide University, our graduate values include respect, excellence, integrity, professionalism and compassion.

Common core

At Adelaide University, all graduates will build relevant and transferable skills through universal common core courses. This innovation is a forward-thinking component of our contemporary program architecture, designed to equip students with the interdisciplinary knowledge they need to succeed in the modern workplace. The common core curriculum spans First Nations knowledges, data knowledges, ethical knowledges, extra-human knowledges, and cultural knowledges. This also provides a shared learning experience for students across the University.

Embedding First Nations knowledges

Adelaide University will meaningfully embed First Nations knowledges into all curricula through purposive collaboration with Elders and Aboriginal Communities and Knowledge Holders. This will emphasise cultural safety, strengths-based approaches, and centering Aboriginal voices and ways of knowing, being and becoming across disciplines.



The Adelaide Academy

The Adelaide Academy will enhance, enrich and extend high potential students through inter-curricular, co-curricular and extra-curricular activities across areas such as personal discovery, equity and social change, innovation, leadership for the future, and widening perspectives, along with additional mentoring and work integrated learning.

Exceptional student experience

Holistic student experience

Our student experience vision is centred on a clear ambition: We empower students to transform themselves, their communities and the world.

We will achieve this through a holistic and integrated approach, relentlessly pursuing accessibility and inclusion, collaborating to create rich and engaging communities, and integrating employability across the student experience.

At Adelaide University, our role is more than just educating students; we empower them to become lifelong learners and the best they can be. We will foster an environment where students not only develop academically but also cultivate the skills, values and mindset needed to effect positive change. By connecting every dimension of their unique journeys, we will encourage students to explore their passions and identities, unlock their potential, and discover their purpose.



Defining characteristics

We will offer an enriching and distinctive experience that prepares graduates to become connected global citizens, ready to shape the future and adapt in a rapidly changing world through:

- Intuitive and engaging digital experiences and a sense of connection no matter how students choose to study.
- A focus on place, culture and community, developing a global outlook while being enriched with Aboriginal knowledges and perspectives.
- Placing students at the centre, supported and empowered to succeed on their own terms, no matter their background.
- Individual flexibility that embraces unique needs, learning preferences and personal goals.
- Connection with industry to gain the advantage of relevant and real-world education, along with proactive career preparation to develop the skills, mindset and capabilities to prosper in the workplace.



Student life

On inception, Adelaide University will be the largest domestic educator of students in Australia. Our diverse student community will be part of a vibrant campus culture and have access to dedicated support services, so they can truly thrive. This includes clubs and societies, volunteering, events, counselling, disability support, international student support, regional student support, Aboriginal student support, student wellbeing, career services, student representation, and more.

Supporting scholarships

To support increased access and participation in higher education, a \$120 million Equity Scholarship Fund will be established in partnership with the South Australian Government, to provide additional support for students to achieve educational success.

Our commitment to students

We are united in our commitment to the success of our students and harnessing the transformative power of education to empower students to become the best they can be. We will do this by:

- recognising every student as unique
- making our students feel welcome
- embedding and honouring student voices
- delivering equity in all that we do.

Our goals



Aim to deliver inclusive online education to more students than any other Australian university.



More students from low socio-economic backgrounds would complete a degree than any other higher education institution in Australia.



One of the nation's top five educators of regional and rural students.



Provide equitable access for learners of potential to a world-class university education widening participation and achievement.



Advance the access, participation and success of First Nations Peoples as both students and members of our University community.



Reimagined research

Our research ambitions

Adelaide University will deliver future-making and partnered world-class research of scale and focus to transform the South Australian economy and contribute to solving global challenges.

We will advance signature research institutes and centres – research concentrations within and across our academic structures – and work across the full value chain from discovery to translation and commercialisation spanning a breadth of domains and through multidisciplinary and transdisciplinary research activities.

Our approach to research training will be nation-leading, with a dedicated Adelaide University Graduate Research School to support our research students through contemporary, accessible and flexible pathways to internationally recognised research qualifications.

Adelaide University research will be:

- partnered and collaborative
- relevant and meaningful
- sector focused
- informed by First Nations Peoples
- aligned to state, national and global priorities
- linked to student success and experience.



Signature themes

Adelaide University will aim to conduct research of the highest global standard through five signature research themes, which are focused on research impact and founded on excellence. Research and translation will be delivered in partnership and collaboration with industry and the community. Our signature research themes include:

- Creative & Cultural
- Defence & National Security
- Food, Agriculture & Wine
- Personal & Societal Health
- Sustainable Green Transition.

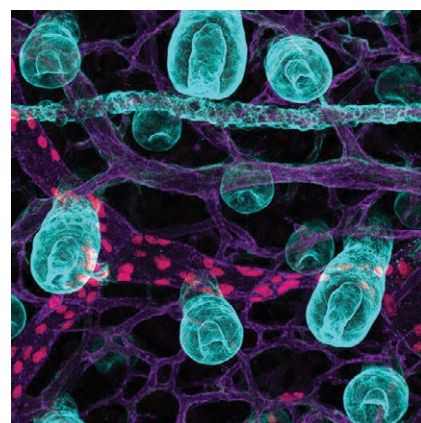


Image by Dr Genevieve Secker

Adelaide University aims to accelerate the recognition of South Australia as a critical testbed for innovation. This will be realised through connected theme strategies and research activities across the institution.



Connected and aligned

Adelaide University will leverage existing collaborations to implement transformational initiatives to become a global powerhouse of research excellence. This will generate through discovery the knowledge that helps us to anticipate national and global trends, to strengthen and diversify the economy, and to support social growth.

We aim to become the research partner of choice and Australia's most industry-engaged university. By accelerating research impact through compelling partnerships and collaborations, we will work at scale with significant resource to find solutions for intergenerational challenges and the building of sovereign capability. Adelaide University aspires to be sustainably ranked in the top 100 universities globally for research, and to be ranked first in Australia for industry research income.

Success measures



Excellent research discovery.



Repeat co-investment in our research endeavours.



Successful translation of research outcomes.



Generating positive impact and making a difference to the wider economy and society.

Graduate research training

Our dedicated Adelaide University Graduate School will educate and inspire future researchers and thought leaders.

The introduction of innovative and flexible degrees provides articulated pathways to the highest research qualification for all prospective candidates. A newly designed Master of Research and suite of Graduate Certificates will offer points of entry and attainment that will recognise prior learning and the diverse needs of our graduate researchers.

Adelaide University will offer an excellent and differentiated experience for research students, intrinsically linked to the wider University community. By delivering internationally recognised qualifications, strong industry connections and increased accessibility, graduates will be sought after across all sectors and will make meaningful contributions with both local and global impact.

Ways of knowing

Adelaide University is committed to the recognition and amplification of First Nations knowledges through First-Nations led, two-way initiatives, including a dedicated strategy for First Nations research.

Healthy futures

We are working closely with local health networks and practitioners to help inform our first Health and Medical Strategy to improve healthcare research and outcomes.

Diverse frontier

Adelaide University will be a leading institution in building the innovative workforce needed to bolster sovereign capability. The Federal and South Australian Governments are jointly investing \$60 million towards the Australian Defence Technologies Academy (ADTA) at the Lot Fourteen innovation precinct, which will be operated by Adelaide University. This Academy will be housed in a state-of-the-art secure facility from 2026, providing research-informed digitally focused education and research training critical to the defence, space and cyber industries.

Powerful partnerships

Impactful and engaged

The impact we have in the wider world will transcend the internal structures which enable it. We aim to become the leading destination for the best global innovators, thinkers, entrepreneurs and researchers aligned to our operations as Australia's most connected university – partnered with the communities we serve and an engine for innovation, greater social cohesion and economic development.

Through powerful partnerships with end-users, industry, government and the broader community – locally, nationally and internationally – we will break down barriers and unlock new ways of thinking and doing.

Alumni network

From day one, Adelaide University will connect more than 400,000 alumni from 150 countries – making it one of the largest alumni groups in Australia. A global network that is unified by the legacies of their graduating institutions and coming together as part of a new generation sharing experiences, stories, memories and networks around the world. Our alumni can access a range of opportunities and benefits, including lifelong learning, professional support and being part of a community to celebrate their achievements.



Going global

Our network of strategic global partnerships with world-leading higher education institutions, research centres, corporations and government agencies will enable knowledge sharing and collaboration at scale to collectively tackle the most pressing global needs and to achieve greater positive impact for all.

Cultural connections

Our cultural institutions and precincts share a rich and modern history, with connections that reach far beyond our campuses and into the wider community – celebrating knowledge, curiosity, meaning and expression. This includes the Elder Conservatorium of Music, the futuristic museum of discovery (MOD.), the Samstag Museum of Art, Special Collections and Archives, the Bob Hawke Prime Ministerial Centre, Kurna Warra Pintyanthi, the Architecture Museum, and the Museum of Classical Archaeology.

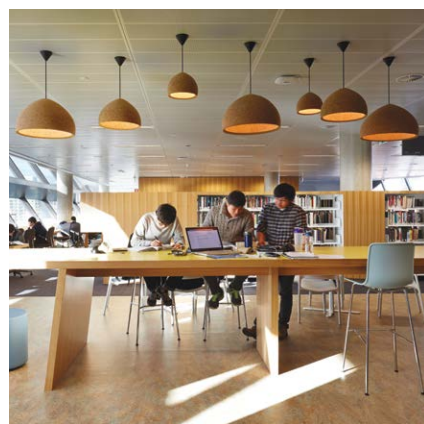
Community and outreach

Adelaide University will be a visible cornerstone in the communities that we serve – partnering, sharing and supporting groups, organisations and initiatives that align with our ambition to create a better Australia through new approaches to tertiary education, global research and innovation. Through collaboration and outreach, we will actively contribute to community needs to empower, shape and grow a vibrant society.

Campus footprint

Adelaide University will proudly hold the largest campus footprint in South Australia, spanning six metropolitan and three regional campuses, along with local, rural, interstate and transnational destinations, hubs and pathway colleges.

Through a detailed masterplan, we will optimise our combined property portfolios to deliver engaging and activated campuses that provide unique experiences reflective of its character and intended purpose, along with facilitating the desired co-location of academic activities to grow and support synergies with industry, aligned to major priorities. Our students, researchers and staff will have access to state-of-the-art facilities equipped with industry-standard tools and technologies. Adelaide University will also offer an extended suite of leading online study options.



Metropolitan
North Terrace



Metropolitan
North Terrace



Metropolitan
Mawson Lakes



Metropolitan
Magill

Metropolitan
Waite





Regional
Roseworthy

Regional
Mount Gambier



Regional
Whyalla



The content in this publication is for general information only and Adelaide University makes no representation about its accuracy, completeness or suitability for any purpose. It is subject to change, and you can find updated information on our website at adelaideuni.edu.au. Printed July 2024. Australian University Provider Number PRV14404 / CRICOS Provider Number 04249J.

Adoring Adelaide

As one of Australia's most liveable cities, Adelaide is shaped by stories. The first of these stories created by the Kaurna people of the Adelaide Plains. We are a celebration of diversity and inclusion with a strong sense of community.

Adelaide is boutique and accessible. It balances the best of urban living with striking natural landscapes and a close connection to the regions – from picturesque coastlines and rolling hills to open parklands, plains and vineyards – you are never too far away.

There is an ever-evolving skyline and an urban renewal that boasts brilliant hospitality, cultural and sporting institutions, and reimagined precincts – presenting the perfect backdrop and host city for national and international events.



We are a society that embraces technological opportunities in education, energy, space, advanced manufacturing, food and wine, creative industries and health services. It's a learner's city for curious minds. We are transformational, setting our own pace for life through advancement and discovery.



Middle right: North Terrace, Adelaide by Michael Waterhouse Photography
Bottom right: SAHMRI, Adelaide by Jake Wundersitz

